

**प्रकरण - ४**  
**पोलीस आणि न्यायालयांकडून गुन्ह्यांची निर्गती**

**पोलिसांकडून निर्गती**  
**भा.दं.वि. खालील गुन्हे**

**४.१.१** महाराष्ट्र राज्यात सन २०१४ मध्ये मागील वर्षाच्या प्रलंबित गुन्ह्यांसह एकूण ३८२५१३ गुन्हे तपासावर किंवा निर्गतीसाठी प्रलंबित होते. टक्केवारीच्या दृष्टीने भा.दं.वि. खालील ६२.० टक्के (२३७०४७) गुन्ह्यांची चालू वर्षात तपासाअंती निर्गती करण्यात आली. पोलीस निर्गतीसाठी प्रलंबित असलेल्या गुन्ह्यांचे प्रमाण ३८.०% इतके असून वर्षा अखेरीस १४५४६६ गुन्हे तपासावर प्रलंबित होते. सन २०१४ मध्ये भा.दं.वि. खालील विविध गुन्ह्यांची पोलिसांकडून करण्यात आलेली निर्गती, तक्ता क्र. १४ मध्ये दर्शविण्यात आलेली आहे. सन २०१४ मध्ये भा.दं.वि. खालील गुन्ह्यांची पोलिसांकडून करण्यात आलेल्या निर्गतीची घटक-निहाय माहिती, तक्ता क्र. १५ मध्ये दर्शविण्यात आली आहे.

**४.१.२** गेल्या पाच वर्षांपासून पोलीस निर्गतीमध्ये, प्रलंबित भा.दं.वि. गुन्ह्यांचे प्रमाण पाहता सन २०१० ते २०१४ या काळात हे प्रमाण वाढत असल्याचे दिसून येते. तर २०१४ मध्ये निर्गतीच्या प्रमाणात अंशतः वाढ आहे. सन २०१० मध्ये ३५.८%, सन २०११ मध्ये ३६.०%, सन २०१२ मध्ये ३६.३%, २०१३ मध्ये ३८.१% व सन २०१४ मध्ये ३८.०% आहे. गेल्या पाच वर्षातील भा.दं.वि. गुन्ह्यांची निर्गती आणि प्रलंबित गुन्ह्यांचे विवरण खालील आलेखात दाखविण्यात आलेले आहे.

**CHAPTER - 4**  
**DISPOSAL OF CASES BY POLICE AND COURTS**

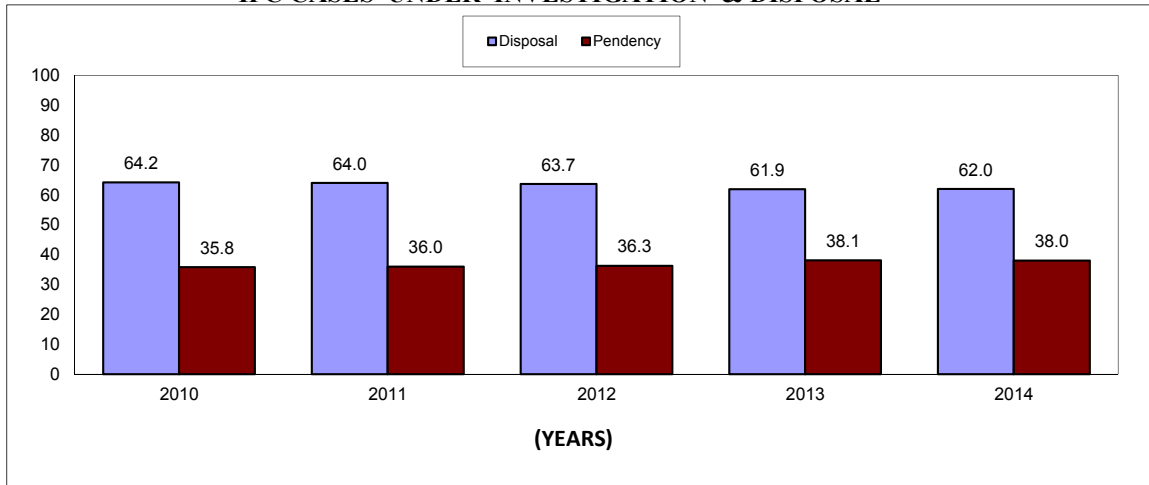
**Disposal by Police**  
**Cases under IPC**

**4.1.1** During the year 2014, 382513 cases including those pending from the previous year were either awaiting disposal or were under investigation by police in Maharashtra. 62.0 percent (237047) of these cases have been disposed off during the current year. Total 145466 cases remained pending for investigation at the end of the year i.e. 38.0% of total cases are under investigation. Table No.14 presents the details of police disposal of various IPC crimes during 2014. Table No.14 presents the unit-wise details, percentage of disposal of various IPC Crimes by the police during 2014. The crime head-wise details of the police disposals and their percentage is given in Table No.15.

**4.1.2** In last 5 years, pendency of IPC cases awaiting Police disposal has increased. During 2010 it was 35.8% during 2011 it was 36%, during 2012 it was 36.3% during 2013 it was 38.1% & it is 38.0% during the year 2014. A graphical presentation of Police disposal and pendency during the last 5 years can be seen in the chart below.

**आलेख क्र. ४.१**  
**भा.दं.वि. गुन्ह्यांचा तपास आणि निर्गती**

**CHART No. 4.1**  
**IPC CASES UNDER INVESTIGATION & DISPOSAL**



४.१.३ पोलीस तपासावर प्रलंबित असलेल्या भादवि गुन्ह्यांच्या विविध शीर्षकांनुसार केलेले विश्लेषण पाहता, बनावट नाणी / चलन संदर्भातील गुन्हे मोठ्या प्रमाणात म्हणजे ७९.२% तपासावर प्रलंबित असल्याचे दिसून येते. स्त्रियांविरुद्धच्या गुन्ह्यांच्या निर्गतीचे प्रमाण हे इतर गुन्ह्यांच्या निर्गतीचे प्रमाणापेक्षा चांगले आहे. या गुन्ह्यांची पोलिसांकडून करण्यात आलेल्या निर्गतीची टक्केवारी पती किंवा त्याचे नातेवाईकांकडून छळ ७९.६%, विनयभंग ६२.२%, हुंडाबळी ७९.० % असे आहे. सन २०१४ मध्ये पोलिसांनी तपास केलेल्या एकूण गुन्ह्यांपैकी ७९.१% गुन्ह्यांमध्ये दोषारोपपत्र दाखल करण्यात आले आहेत. तपासाअंती अंतिम अहवाल (अ वर्गवारी) सादर करण्यात आलेल्या गुन्ह्यांची टक्केवारी २८.०% आहे. मागील वर्षाशी तुलना करता, पोलीस निर्गतीच्या प्रमाणात चालू वर्षी अंशतः वाढ झाल्याचे दिसून येते. सन २०१३ मध्ये ते ६९.९% होते, तर २०१४ मध्ये ६२.०% इतके आहे.

4.1.3 Analysis of crimes under different heads of pending IPC cases, Police investigation shows the highest pendency is of Counterfeiting (79.2% cases). Disposal by Police in cases relating to crime against women is better than other offences. Head-wise break-up of disposal of crimes under different heads is : Cruelty By Husband or Relatives 71.6%, Molestation 62.2%, Dowry Deaths 71.0%. During 2014, 71.1% cases are charge-sheeted and 28.0% cases are finalized as true but undetected ('A' Final). Marginal increase is observed in Police disposal during 2014 as compared to the year 2013. During 2013 it was 61.9% as against 62.0% in 2014.

आलेख क्र. ४.२

सन २०१४ मधील भादवि गुन्ह्यांची पोलीस निर्गतीची टक्केवारी

CHART No. 4.2

PERCENTAGE OF DISPOSAL OF I.P.C. CASES BY POLICE - 2014

Crime Head	Disposal	Crime Head	Pendency
Murder	67.6	Murder	32.4
Rape	67.5	Rape	32.5
Kid & Abd.	51.9	Kid & Abd.	48.1
Dacoity	62.0	Dacoity	38.0
Robbery	60.9	Robbery	39.1
Burglary	59.5	Burglary	40.5
Theft	56.5	Theft	43.5
Riots	67.4	Riots	32.6
Arson	65.9	Arson	34.1
Dowry Deaths	71.0	Dowry Deaths	29.0
Assault on women with intent to outrage her Modesty	67.8	Assault on women with intent to outrage her Modesty	32.2

Disposal 62%      Pendency 38%

४.१.४ सन २०१४ मध्ये पोलीस तपासावर असलेल्या ३८२५१३ गुन्ह्यांपैकी (मागील वर्षीच्या प्रलंबित गुन्ह्यांसह) १६२९९२ गुन्ह्यांमध्ये न्यायालयात दोषारोपपत्र दाखल करण्यात आले आहे. तपास केलेल्या ३८२५१३ गुन्ह्यांपैकी २४३० गुन्ह्यांमध्ये (०.६३%) फिर्याद खोटी असल्याचे किंवा गैरसमजुतीने दाखल केल्याचे दिसून येते. वर्षाअखेरीस १४५४६६ गुन्हे तपासावर प्रलंबित राहिलेले आहेत. अपहरण व पळवून नेणे या शीर्षकाखाली ३.९% गुन्ह्यांमध्ये फिर्याद खोटी असल्याचे किंवा गैरसमजुतीने फिर्याद दाखल केल्याचे दिसून येते. राज्य पातळीवर भादवि खाली फिर्याद खोटी असल्याचे किंवा गैरसमजुतीने फिर्याद दाखल केल्याचे ०.६३% प्रमाण पाहता अपहरण व पळवून नेणे या शीर्षकाचा वाटा लक्षणीय असल्याचे दिसून येते.

4.1.4 During 2014 out of total 382513 cases for investigation (including cases pending from previous year), 162992 cases are charge-sheeted by the police. Out of 382513 cases, charge is found false or mistake of fact or law in 2430 cases, which are 0.63%. In all 145466 cases remained pending for investigation at the end of the year. 3.9% cases of Kidnapping & Abduction are found to be either false or they were mistake of fact or law etc. This is significantly higher than the statewide average of 0.63%.

४.१.५ भादंवि खालील राज्याची एकूण प्रलंबित गुन्ह्यांची टक्केवारी ३८.०% आहे. भा.दं.वि. खालील गुन्ह्यांचे घटक-निहाय निर्गतीचे प्रमाण पाहता त्या त्या घटकांमध्ये तपासावर / निर्गतीसाठी प्रलंबित गुन्ह्यांशी तुलना करता सर्वात जास्त गुन्हे मुंबई शहर (६७.६%) येथे प्रलंबित असून त्याखालोखाल पुणे ग्रामीण (५३.१%) आणि गडचिरोली

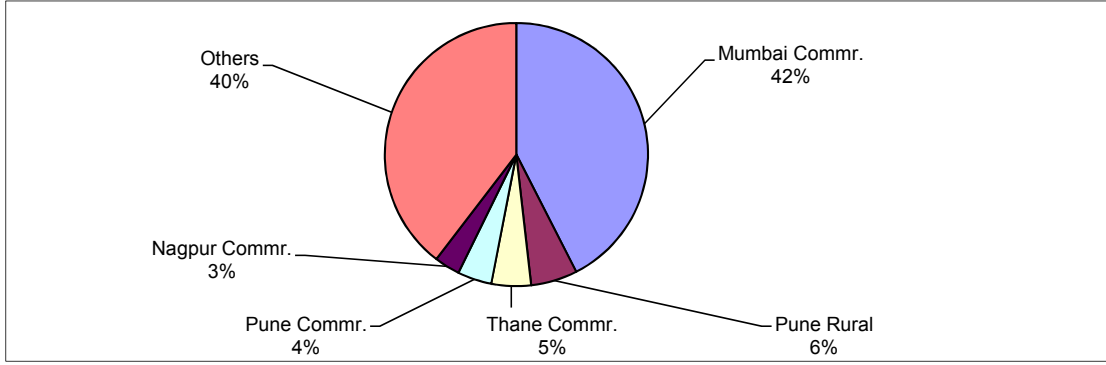
4.1.5 Unit-wise disposal of I.P.C. cases shows that Mumbai (C) 67.6% has the highest pendency followed by Pune Rural 53.1% and Gadchiroli 51.0% as compared to the State average, i.e. 38.0% total pendency.

आलेख क्र. ४.३

महाराष्ट्र राज्यात तपासावर प्रलंबित असणा-या भा.दं.वि. गुन्ह्यांबाबत घटकांचा प्रतिशत वाटा

CHART No. 4.3

UNIT-WISE PROPORTION OF PERCENTAGE OF PENDENCY OF I.P.C. CASES IN THE STATE



विशेष व स्थानिक कायद्याखालील गुन्हे

४.२.१ विशेष व स्थानिक कायद्याखालील विविध शीर्षकाखालील गुन्ह्यांची पोलिस निर्गतीची माहिती तक्ता क्र.१६ मध्ये देण्यात आलेली आहे. एकूण १८९५४४ गुन्ह्यांपैकी (यामध्ये मागील वर्षा मधील प्रलंबित गुन्ह्यांचा समावेश आहे.) सन २०१४ मध्ये ६८.३% गुन्ह्यांची निर्गती करण्यात आली, भा.दं.वि. खालील एकूण गुन्ह्यांच्या निर्गतीची टक्केवारी ६२.०% असून त्याच्याशी तुलना करता, विशेष व स्थानिक गुन्ह्यांच्या निर्गतीची टक्केवारी ६८.३% आहे. सन २०१४ अखेर विशेष व स्थानिक कायद्याखालील फक्त ६००७६ म्हणजेच ३१.७% गुन्हे तपासावर प्रलंबित होते. सन २०१० ते सन २०१४ या कालावधीतील विशेष व स्थानिक कायद्याखालील गुन्ह्यांची पोलिसांनी केलेली निर्गती व प्रलंबित गुन्हे यांची माहिती खालील आलेखात दर्शविण्यात आली आहे.

Cases under SLL

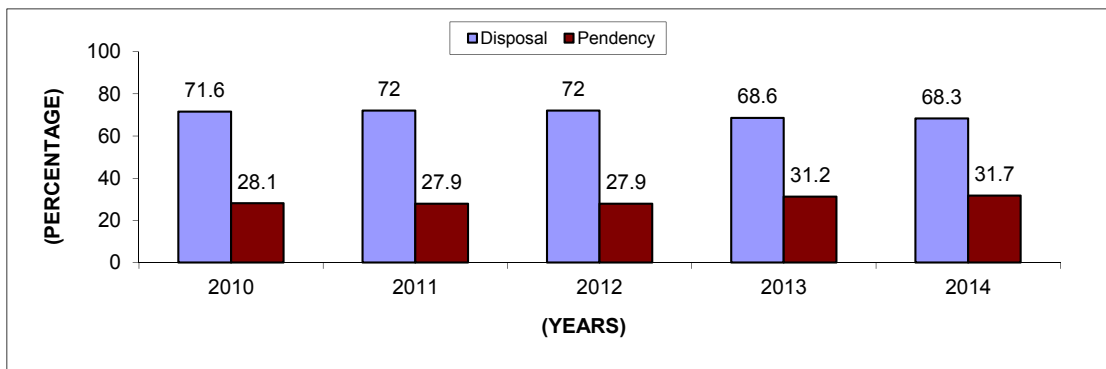
4.2.1 Disposal of S.L.L. cases by police under different crime heads is presented in the table No.16. Out of the total 189544 S.L.L. cases (including cases pending from previous years), police disposed off 68.3% cases, including cases where investigation is denied. This rate of disposal is better than that of the rate of disposal of IPC cases, i.e. 62.0%. Only 31.7% of S.L.L. cases, i.e. 60076 are pending for police disposal at the end of 2014. The following chart presents the comparative figures of police disposal / pendency of S.L.L. cases between 2010 to 2014.

आलेख क्र. ४.४

सन २०१० ते २०१४ मधील वि.व स्था. कायद्याखालील गुन्ह्यांची पोलिसांकडून निर्गती व प्रलंबित गुन्हे

CHART No. 4.4

PERCENTAGE OF DISPOSAL OF SLL CASES BY POLICE DURING 2010 TO 2014



४.२.२ विशेष व स्थानिक कायद्याखालील प्रलंबित गुन्ह्यांची घटक-निहाय आकडेवारी तक्ता क्र.१७ मध्ये दिलेली आहे. राज्यात या सदरामध्ये सर्वात जास्त म्हणजे ९५.२% गुन्हे सोलापूर शहर आयुक्तालय येथे तपासावर प्रलंबित आहेत. राज्याचे तपासावरील प्रलंबित गुन्ह्यांची टक्केवारी ३१.७% इतकी आहे. राज्यपातळीवरील सरासरी पेक्षा जास्त गुन्हे तपासावर असणारे अन्य घटक पुढील प्रमाणे आहेत, मुंबई शहर ४६.५%, पुणे ग्रामीण ४५.१%, पालघर ३९.१% व ठाणे ग्रामीण ३७.९%.

4.2.2 The unit-wise pendency of S.L.L. cases for investigation by police is given in tables No.17 It reveals that Solapur (C) has the highest rate of pendency, i.e. 95.2%. The total pendency percentage for the State is 31.7% The other units which recorded a pendency percentage higher than that of the state average are Mumbai (C) 46.5%, Pune (R) 45.1%, Palghar 39.1% & Thane (R) 37.9%.

४.२.३ विशेष व स्थानिक कायद्याखालील विविध गुन्ह्यांच्या निर्गतीचा तपशील तक्ता क्र. १६ मध्ये देण्यात आला आहे. त्याचे अवलोकन करता, एकूण प्रलंबित ६००७६ गुन्ह्यांपैकी दारूबंदी कायद्याखालील ३३१४६ (५५.२%) गुन्हे प्रलंबित आहेत.

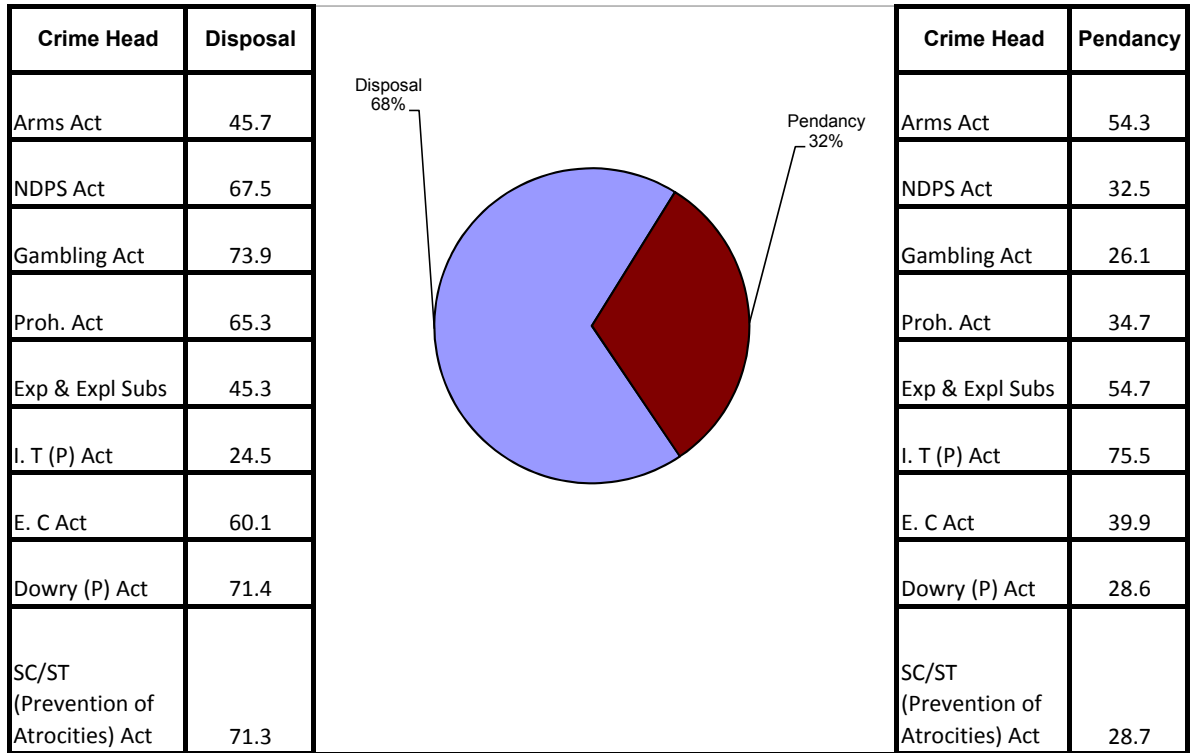
4.2.3 Details of the disposal of various S.L.L. crimes are presented in Table No. 16. A study of this indicates that out of 60076 pending cases, total 33146 (55.2%) cases of Prohibition Act are pending at the end of year 2014.

आलेख क्र. ४.५

सन २०१४ मधील विशेष व स्थानिक कायद्याखालील गुन्ह्यांची पोलीसांनी केलेल्या निर्गतीचे प्रमाण

CHART No. 4.5

PERCENTAGE OF DISPOSAL OF S.L.L. CASES BY POLICE - 2014



## न्यायालयांकडून निर्गती

### भा.दं.वि. खालील गुन्हे

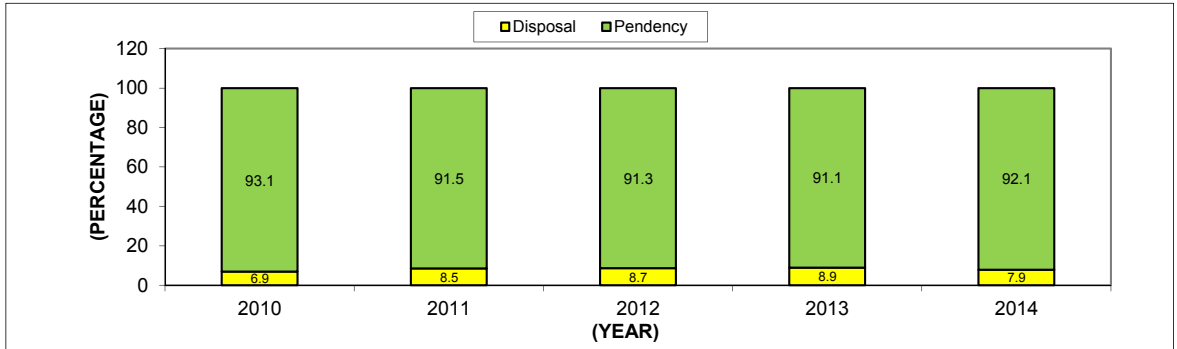
४.३.१ भा.दं.वि. खालील शीर्षकानुसार गुन्हेयांची न्यायालयांकडून झालेल्या निर्गतीची आकडेवारी तक्ता क्र. १८ मध्ये देण्यात आली आहे. सन २०१४ मध्ये मागील वर्षाच्या प्रलंबित खटल्यांसह एकूण १५३१९६६ खटले सुनावणीस आलेले होते. मागील वर्षी १५०३४८६ गुन्हे न्यायालयांत सुनावणीस आले होते. मागील वर्षाशी तुलना करता चालू वर्षात सुनावणीस आलेल्या खटल्यांमध्ये १.८९% वाढ झालेली आहे. सन २०१४ वर्षाअखेरीस राज्यातील वेगवेगळ्या फौजदारी न्यायालयांमध्ये एकूण १४११४९२ खटले सुनावणीसाठी प्रलंबित राहिले आहेत. हे प्रमाण कोर्टातील एकूण गुन्हेयांच्या ९२.१% इतके आहे. यावरून राज्यामध्ये वेगवेगळ्या न्यायालयांत सुनावणीसाठी मोठ्या प्रमाणात खटले प्रलंबित आहेत असे दिसून येते. म्हणजे न्यायालयांकडून खटले चालविण्याचे प्रमाण वाढलेले नाही आणि त्यामुळे वाढती गुन्हेगारी, पोलिसांनी केलेली गुन्हेयांची निर्गती आणि त्यानुसार दोषारोपपत्र दाखल करण्याचे वाढलेले प्रमाण यांचा वर्षानुवर्ष मेळ जमलेला नाही. पोलिसांनी गुन्हेयांची निर्गती करण्याचे आणि न्यायालयांनी खटले निकाली काढण्याचे गुणोत्तर २:१ असे आहे. या दोहोंमधील तफावत कमी करण्याची आवश्यकता आहे. खालील तक्त्यात सन २०१० ते सन २०१४ या कालावधीत भा.दं.वि. खालील गुन्हेयांची न्यायालयांतून करण्यात आलेल्या निर्गती व प्रलंबनाची टक्केवारीची माहिती देण्यात आली आहे.

### आलेख क्र. ४.६

सन २०१० ते २०१४ मधील भा.दं.वि. गुन्हेयांची कोर्टाकडून निर्गती व प्रलंबन टक्केवारी

CHART No. 4.6

### PERCENTAGE DISPOSAL AND PENDENCY OF IPC CASES BY COURTS DURING 2010-2014

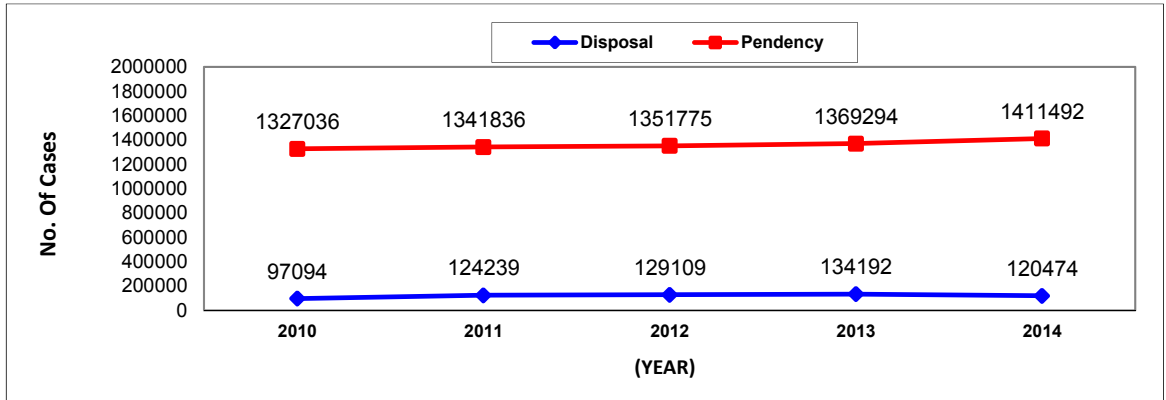


### आलेख क्र. ४.७

भा.दं.वि. खालील न्यायालयांत सुनावणीसाठी दाखल खटल्यांची निर्गती व प्रलंबन

CHART No. 4.7

### DISPOSAL AND PENDENCY OF IPC CASES FOR TRIAL IN THE COURTS.



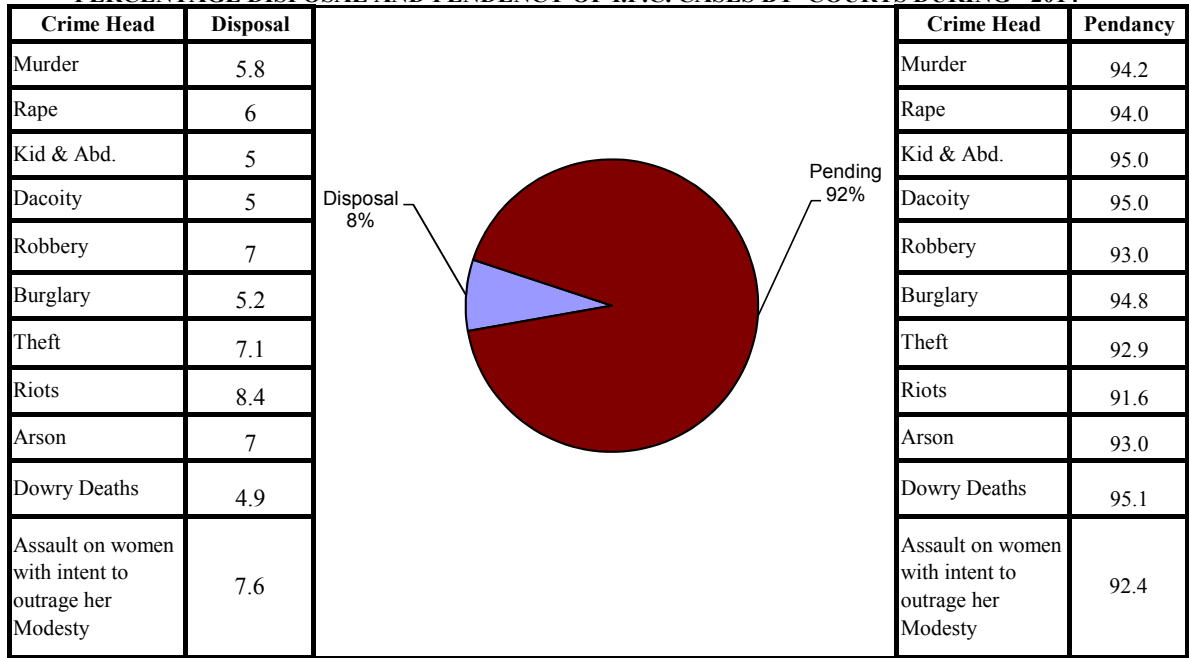
४.३.२ तक्ता क्र.१९ चे विश्लेषण करता सर्व जिल्ह्यांमध्ये न्यायालयांत सुनावणीसाठी प्रलंबित असलेल्या भादंवि खालील खटल्यांची टक्केवारी ९२.१% पेक्षा जास्त असल्याचे दिसून येते. सुनावणीसाठी प्रलंबित खटल्यांची सर्वात जास्त टक्केवारी ठाणे शहर या घटकाची ९७.७% आहे. त्याखालोखाल पुणे शहर ९७.२%, नवी मुंबई ९६.८% व सोलापूर शहर ९६.५%. सन २०१४ मध्ये राज्यात न्यायालयीन सुनावणीसाठी प्रलंबित खटल्यांची टक्केवारी ९२.१% इतकी होती. राज्यात एकुण १८ घटकांची (जिल्हा व आयुक्तालय) टक्केवारी ९२.१% पेक्षा जास्त आहे. सन २०१४ मध्ये न्यायालयाकडून भादंवि अंतर्गत गुन्ह्यांची निर्गती व प्रलंबित खटल्याची टक्केवारी खालील आलेखात दर्शविली आहे.

**आलेख क्र. ४.८**

सन २०१४ मधील भादंवि गुन्ह्यांची कोर्टातून करण्यात आलेल्या निर्गती व प्रलंबित खटल्यांची टक्केवारी

**CHART No. 4.8**

**PERCENTAGE DISPOSAL AND PENDENCY OF I.P.C. CASES BY COURTS DURING - 2014**



४.३.३ सुनावणीसाठी न्यायालयांत प्रलंबित असलेल्या भा.दं.वि. खालील शीर्ष-निहाय गुन्ह्यांची टक्केवारी तक्ता क्र. १८ मध्ये दर्शविण्यात आली आहे. भा.दं.वि. च्या सर्व गुन्हे शीर्षाखालील न्यायालयांत सुनावणीसाठी प्रलंबित असलेल्या खटल्यांची टक्केवारी ९२.१% आहे.

४.३.४ गुन्हे शाबितीचे प्रमाण म्हणजे सुनावणी झालेल्या खटल्यांशी शाबीत झालेल्या खटल्यांची टक्केवारी होय. २०१४ सालात हे प्रमाण १९.३% इतके असून सन २०१३ मध्ये ते १३.३% होते. गुन्ह्यांचे शीर्षानुसार विश्लेषण पाहता बनावट चलन (३६.८%), जवरी चारी (३२.८%), खून (२७.५%), निष्काळजीपणे वाहन चालवणे (२६.५%) व इतर भा.दं.वि. (२५.०%) याप्रमाणे गुन्हे शाबितीचे प्रमाण जास्त आहे. चोरी व दुखापत खटल्यांमध्ये तडजोड किंवा खटला मागे घेण्याचे प्रमाण जास्त असून ते अनुक्रम १.४% व २.२% इतके आहे.

4.3.2 Analysis of Table No. 19 indicates that all units have more than 92.1% of sent up IPC cases pending for trial in courts. The highest pendency was reported from Thane (C) 97.7%, followed by Pune (C) 96.5%, Navi Mumbai (C) 96.8% & Solapur (C) 96.5%. The State average is 92.1% during 2014. In all 18 units have a pendency higher than that of the State average of 92.1%. The following chart gives percentage disposal & pending of IPC cases by courts during 2014.

4.3.3 Crime head-wise details of pendency of IPC cases, for trials is shown in Table No. 18. In all 92.1% cases are pending in the court for trial at the end of year 2014.

4.3.4 The ratio between cases convicted & total number of cases tried indicates the conviction percentage. During 2014, the conviction rate was 19.3% as compared to 13.3% in 2013. Crime head-wise analysis reveals that the conviction rate was highest in Counterfeiting (36.8%) followed by Robbery (32.8%), Murder (27.5%), Incidences of rash driving (26.5%) & Other IPC (25.0%). The highest percentage of cases, which were either compounded or withdrawn, are related to Theft and Hurt is 1.4 % & 2.2% respectively.

## विशेष व स्थानिक कायद्याखालील गुन्हे

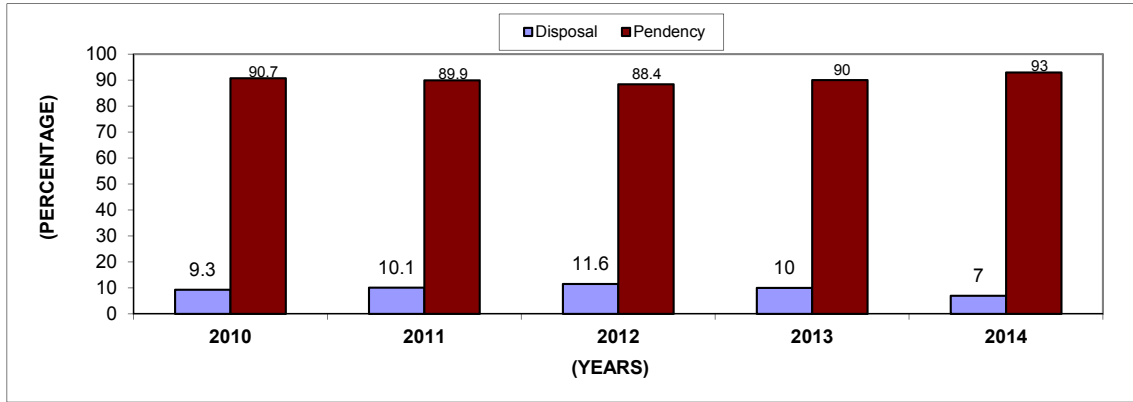
४.४.१ न्यायालयांकडून विशेष व स्थानिक कायद्याखालील खटल्यांच्या झालेल्या निर्गतीबाबतची माहिती तक्ता क्र.२० मध्ये देण्यात आली आहे. सन २०१४ मध्ये एकूण १२५५५४० खटले यामध्ये (मागील वर्षातील प्रलंबित खटल्यांसह) फौजदारी न्यायालयांत सुनावणीसाठी प्रलंबित होते. यामध्ये सन २०१३ सालातील न्यायालयांत सुनावणीसाठी प्रलंबित असलेल्या खटल्यापेक्षा ०.०२ % वाढ झालेली आहे. न्यायालयांत सुनावणीसाठी प्रलंबित असलेल्या खटल्याची टक्केवारी सन २०१३ मध्ये ९०.०% इतकी होती तर सन २०१४ मध्ये हीच टक्केवारी ९३% इतकी आहे. न्यायालयांत सन २०१० ते २०१४ या कालावधीत निर्गती झालेल्या खटल्यांचा तुलनात्मक आलेख खाली देण्यात आलेला आहे.

### आलेख क्र. ४.९

सन २०१०-२०१४ मधील विशेष व स्थानिक कायद्याखालील खटल्यांची कोर्टाकडून करण्यात आलेली निर्गती व प्रलंबन

Chart No. 4.9

DISPOSAL AND PENDENCY PERCENTAGE OF SLL CASES BY COURTS DURING 2010 - 2014



४.४.२ विशेष व स्थानिक कायद्याखालील खटल्यांची न्यायालयांकडून केलेल्या निर्गतीची घटक-निहाय माहिती तक्ता क्र.२१ मध्ये देण्यात आली आहे. राज्यात सर्वात जास्त खटले सोलापूर शहर (९९.६%) प्रलंबित आहेत. त्याखालोखाल नाशिक शहर (९९.३%), नागपूर रेल्वे (९९.१%), ठाणे शहर (९८.८%), या घटकांचा क्रम आहे. सन २०१४ मध्ये न्यायालयांत सुनावणीसाठी प्रलंबित असलेल्या खटल्यांची सर्वात कमी म्हणजे ३९.७% टक्केवारी गडचिरोली जिल्ह्यांची आहे. टक्केवारी ९३% पेक्षा अधिक असलेले घटक पुढील प्रमाणे सोलापूर शहर (९९.६ %), नाशिक शहर (९९.३%), नागपूर रेल्वे (९९.१ %), ठाणे शहर (९८.८%), पालघर (९८.६%), सोलापूर ग्रामीण (९८.५ %), पुणे शहर (९८.०%), पुणे ग्रामीण (९७.४%), नवी मुंबई (९७.४ %), ठाणे ग्रामीण (९६.८%), अहमदनगर (९६.६ %), लातूर (९६.३ %), धुळे (९६.३ %), सांगली (९५.८ %), औरंगाबाद शहर (९५.७ %), कोल्हापूर (९५.४ %), यवतमाळ (९५.० %), अमरावती शहर (९४.७ %), नांदेड (९३.४ %) व मुंबई रेल्वे (९३.२ %) असल्याची दिसून येते. राज्याची सरासरी टक्केवारी ९३% असून त्यापेक्षा अधिक टक्केवारी असलेले एकूण २० घटक आहेत.

## Cases under S.L.L.

4.4.1 The details of SLL crimes disposed off by the courts are shown in Table No. 20. There were as many as 1255540 cases (including those pending from previous years) awaiting disposal by criminal courts in the State during 2014. This indicates 0.02% increase as compared to 2013. The pendency of SLL cases in courts during 2014 is 93.0% as against 90.0% during 2013. The following Chart shows the comparative figures of the disposal of cases by courts during the 2010 to 2014.

4.4.2 A detailed information of Unit-wise disposal of SLL crimes by various courts is given in Table No.21. Among the Units, the highest number of SLL cases pending disposal is in Solapur (C) (99.6%), followed by Nasik (C) (99.3 %), Nagpur Railway (99.1%), Thane (C) (98.8%). The lowest pendency is in Gadchiroli i.e. 39.7%. Units which have pendency percentage over 93% are Solapur (C) (99.6 %), Nasik (C) (99.3%), Nagpur Railway (99.1 %), Thane (C) (98.8%), Palghar (98.6%), Solapur (R) (98.5 %), Pune (C) (98.0%), Pune (R) (97.4%), Navi Mumbai (R) (97.4 %), Thane (R) (96.8%), Ahmednagar (96.6%), Latur (96.3 %), Dhule (96.3%), Sangli (95.8%), Aurangabad (C) (95.7%), Kolhapur (95.4%), Yavatmal (95.0%), Amravati (C) (94.7%), Nanded (93.4%) & Mumbai Railway (93.2%). There are 20 units having higher pendency than that of State percentage average, i.e. 93%.

४.४.३ सन २०१४ मध्ये न्यायालयांकडून निर्गती झालेल्या विशेष व स्थानिक कायद्याखालील विविध गुन्हेशीर्षाच्या खटल्यांची टक्केवारी तक्ता क्र.२० मध्ये देण्यात आली आहे. काही विशेष व स्थानिक कायद्याखालील खटल्यांमध्ये शाबितीचे प्रमाण अधिक असल्याचे दिसून येते, अंमलीपदार्थ विरोधी कायदा (९२.१%), भारतीय पारपत्र कायदा (९१.१%), इतर स्थानिक विशेष कायदे (७२.९%) व परकीय नागरीक नोंदणी कायदा (७१.४%). तर दारूबंदी कायद्यामध्ये गुन्हे शाबितीचे प्रमाण (१.३%) इतके कमी आहे.

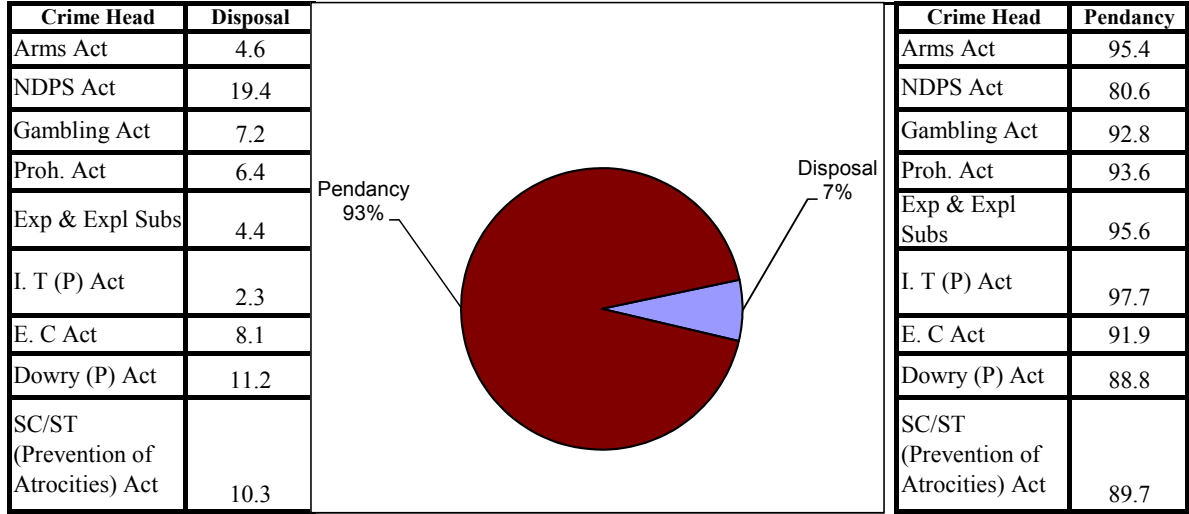
4.4.3 Disposal of various S.L.L crimes by courts during 2014 is presented in Table No. 20. Some of the following SLL Acts show better conviction rate. Narcotic Drugs & Psychotropic Substances Act, 1985 (92.1%), Passport Act, 1967 (91.1%), Other SLL Crimes (72.9%) & Registration of Foreigners Act, 1939 (71.4%). While conviction rate is very low in Prohibition Act cases which is (1.3%).

आलेख क्र. ४.१०

सन २०१४ मधील स्थानिक व विशेष कायद्याखालील खटल्यांची कोर्टाकडून निर्गती व प्रलंबन टक्केवारी

CHART No. 4.10

PERCENTAGE OF DISPOSAL AND PENDENCY OF S.L.L. CASES BY COURTS- 2014



४.५ कोर्टाची माहिती व सुनावणीचा कालावधी २०१४

सन २०१४ सालात कोर्टाकडून सुनावणी पूर्ण करण्यासाठी घेण्यात आलेल्या कालावधी बाबत माहिती खालील तक्त्यामध्ये दर्शविण्यात आलेली आहे.

4.5 Details of courts & Periods of Trials 2014

Details of time taken by court to complete the trial in the year 2014 is given below.

तक्ता क्र. ४.१

विविध न्यायालये आणि सुनावणीच्या कालावधीनिहाय निर्गती केलेले भा.दं.वि. खटले - २०१४

Table No. 4.1

TYPE OF COURTS & PERIODS OF TRIALS (IPC CASES) - 2014

Sr. No.	Type of Courts	Total Number of cases in which trials have been completed						Total
		Duration of Trials						
		Less Than 6 months	6 months & above-Less than 1 year	1 year & above-Less than 3 years	3 years & above-Less than 5 years	5 years & above-Less than 10 years	10 & above years	
[1]	[2]	[3]	[4]	[5]	[6]	[7]	[8]	[9]
1	District or Session Judge	50	376	1356	956	557	146	3441
2	Additional Session Judge	138	384	1311	1113	604	220	3770
3	Chief Judicial Magistrate	636	1276	2986	2671	1432	726	9727
4	Judicial Magistrate (I)	5784	9465	23704	15509	8594	5215	68271
5	Judicial Magistrate (II)	1001	1197	5311	4991	2508	632	15640
6	Special Judicial Magistrate	14	101	527	564	432	278	1916
7	Juvenile Justice Board	172	189	319	141	39	15	875
8	Other Courts (if any)	35	98	363	467	331	48	1342
9	Total (1 to 8)	7830	13086	35877	26412	14497	7280	104982



तक्ता क्र. १४  
सन २०१४ मध्ये पोलिसांकडून भा.दं.वि. गुन्ह्यांची निर्गती

Table No. 14

DISPOSAL OF IPC CASES BY POLICE DURING 2014

Sr. No.	Crime Head	Cases pending investigation from previous year	Cases reported during the year (156(3) Cr.P.C. + Police Stations)	No. of cases withdrawn by the Govt. during investigation	Cases transferred to other Police Station/ Magistrate	Total Cases for investigation (Col. 3+4 - 5 - 6)
1	2	3	4	5	6	7
1	Murder	1382	2670	0	9	4043
2	Attempt to commit Murder	1444	2613	0	4	4053
3	Culpable Homicide not amounting to Murder	118	171	0	2	287
4	Attempt to commit Culpable Homicide	6	11	0	0	17
5	Rape	1195	3438	0	2	4631
6	Attempt to commit Rape	4	15	0	0	19
7	Kidnapping & Abduction_Total	1927	3793	0	5	5715
8	Dacoity	664	885	0	0	1549
9	Making Preparation and Assembly for committing Dacoity	172	293	0	2	463
10	Robbery	5275	9466	0	2	14739
11	Criminal Trespass/Burglary_Total	11837	17171	0	2	29006
12	Theft	39404	56283	16	4	95667
13	Unlawful Assembly	584	1006	0	0	1590
14	Riots	3679	7760	0	0	11439
15	Criminal Breach of Trust	3158	1958	3	30	5083
16	Cheating	12028	9959	15	49	21923
17	Forgery	328	1293	1	38	1582
18	Counterfeiting	900	201	0	2	1099
19	Arson	614	1180	0	0	1794
20	Grievous Hurt	4795	8127	0	2	12920
21	Dowry Deaths	100	279	0	0	379
22	Assault on women with intent to outrage her Modesty	3147	10001	2	4	13142
23	Insult to the Modesty of Women	1111	1575	0	0	2686
24	Cruelty by Husband or his Relatives	3188	7696	2	5	10877
25	Importation of Girls from Foreign Country	0	1	0	0	1
26	Causing Death by Negligence	4638	12619	0	2	17255
27	Offences against State	1	1	0	0	2
28	Offences promoting enmity between different groups	42	33	0	0	75
29	Extortion	325	780	0	9	1096
30	Disclosure of Identity of Victims	0	0	0	0	0
31	Incidence of Rash Driving	6737	26060	0	3	32794
32	Human Trafficking	18	108	0	1	125
33	Unnatural Offences	11	102	0	1	112
34	Other IPC crimes	24081	62286	0	17	86350
35	<b>Total Cognizable IPC crimes</b>	<b>132913</b>	<b>249834</b>	<b>39</b>	<b>195</b>	<b>382513</b>

Table No. 14 (Continued)

Sr. No.	Crime Head	Cases not investigated U/S 157(1)(b) of Cr.PC	Cases ended as final report false	Cases ended as mistake of fact or of law	Cases in ended as final report as Non Cognizable Submitted during the year	Cases in which charge-sheets were submitted
1	2	8	9	10	11	12
1	Murder	0	48	37	33	2290
2	Attempt to commit Murder	0	92	18	22	2306
3	Culpable Homicide not amounting to Murder	0	2	3	1	142
4	Attempt to commit Culpable Homicide	0	0	1	0	7
5	Rape	1	38	24	6	3024
6	Attempt to commit Rape	0	0	0	0	12
7	Kidnapping & Abduction_ Total	0	225	888	23	1507
8	Dacoity	0	56	26	29	761
9	Making Preparation and Assembly for committing Dacoity	0	0	0	0	277
10	Robbery	0	215	65	101	4694
11	Criminal Trespass/Burglary_ Total	0	106	92	39	5136
12	Theft	36	352	704	251	17584
13	Unlawful Assembly	0	28	11	13	908
14	Riots	0	107	50	125	7171
15	Criminal Breach of Trust	0	33	105	13	1275
16	Cheating	1	304	410	155	4849
17	Forgery	0	13	22	2	356
18	Counterfeiting	0	1	5	0	77
19	Arson	0	17	24	7	791
20	Grievous Hurt	0	44	38	51	7367
21	Dowry Deaths	0	0	1	1	266
22	Assault on women with intent to outrage her Modesty	1	126	48	66	8464
23	Insult to the Modesty of Women	0	7	5	5	1622
24	Cruelty by Husband or his Relatives	0	49	90	21	7515
25	Importation of Girls from Foreign Country	0	0	0	0	1
26	Causing Death by Negligence	0	17	19	593	8226
27	Offences against State	0	0	0	0	0
28	Offences promoting enmity between different groups	0	0	1	0	5
29	Extortion	0	14	8	11	576
30	Disclosure of Identity of Victims	0	0	0	0	0
31	Incidence of Rash Driving	0	34	29	28	21326
32	Human Trafficking	0	0	0	0	48
33	Unnatural Offences	0	1	1	0	66
34	Other IPC crimes	2	501	389	550	54343
35	<b>Total Cognizable IPC crimes</b>	<b>41</b>	<b>2430</b>	<b>3114</b>	<b>2146</b>	<b>162992</b>

Table No. 14 (Concluded)

Sr. No.	Crime Head	Cases in which chargesheets were not laid but final report as True submitted	Total cases Disposed off by police (Col. 8+9+10+11+12+13)	Cases pending investigation at the end of the year	Cases Chargesheet Rate {Col.12/(12+13)} x 100	Cases Pendency Rate {Col.15/(3+4)} x 100
1	2	13	14	15	16	17
1	Murder	326	2734	1309	87.5	32.3
2	Attempt to commit Murder	74	2512	1541	96.9	38
3	Culpable Homicide not amounting to Murder	9	157	130	94	45
4	Attempt to commit Culpable Homicide	0	8	9	100	52.9
5	Rape	31	3124	1507	99	32.5
6	Attempt to commit Rape	0	12	7	100	36.8
7	Kidnapping & Abduction_Total	322	2965	2750	82.4	48.1
8	Dacoity	88	960	589	89.6	38
9	Making Preparation and Assembly for committing Dacoity	3	280	183	98.9	39.4
10	Robbery	3901	8976	5763	54.6	39.1
11	Criminal Trespass/Burglary_Total	11878	17251	11755	30.2	40.5
12	Theft	35161	54088	41579	33.3	43.5
13	Unlawful Assembly	54	1014	576	94.4	36.2
14	Riots	257	7710	3729	96.5	32.6
15	Criminal Breach of Trust	347	1773	3310	78.6	64.7
16	Cheating	3058	8777	13146	61.3	59.8
17	Forgery	111	504	1078	76.2	66.5
18	Counterfeiting	144	227	872	34.8	79.2
19	Arson	343	1182	612	69.8	34.1
20	Grievous Hurt	233	7733	5187	96.9	40.1
21	Dowry Deaths	1	269	110	99.6	29
22	Assault on women with intent to outrage her Modesty	200	8905	4237	97.7	32.2
23	Insult to the Modesty of Women	31	1670	1016	98.1	37.8
24	Cruelty by Husband or his Relatives	111	7786	3091	98.5	28.4
25	Importation of Girls from Foreign Country	0	1	0	100	0
26	Causing Death by Negligence	3676	12531	4724	69.1	27.4
27	Offences against State	0	0	2		100
28	Offences promoting enmity between different groups	8	14	61	38.5	81.3
29	Extortion	36	645	451	94.1	40.8
30	Disclosure of Identity of Victims	0	0	0		
31	Incidence of Rash Driving	1972	23389	9405	91.5	28.7
32	Human Trafficking	0	48	77	100	61.1
33	Unnatural Offences	2	70	42	97.1	37.2
34	Other IPC crimes	3947	59732	26618	93.2	30.8
<b>35</b>	<b>Total Cognizable IPC crimes</b>	<b>66324</b>	<b>237047</b>	<b>145466</b>	<b>71.1</b>	<b>38</b>

तक्ता क्र. १५

सन २०१४ मध्ये पोलिसांकडून भा.दं.वि. गुन्ह्यांची निर्गती (घटक-निहाय)

Table No.15

DISPOSAL OF IPC CASES BY POLICE DURING 2014 (UNIT-WISE)

Sr.No.	Unit	Cases pending investigation from previous year	Cases reported during the year (156(3) Cr.P.C. + Police Stations)	No. of cases withdrawn by the Govt. during investigation	Cases transferred to other Police Station/ Magistrate	Total Cases for investigation (Col. 3+4 - 5 - 6)	Cases not investigated U/S 157(1)(b) of Cr.PC	Cases ended as final report false	Cases ended as mistake of fact or of law
1	2	3	4	5	6	7	8	9	10
1	Akola	1429	4433	0	0	5862	0	121	0
2	Amravati Rural	1958	6948	0	0	8906	0	46	71
3	Buldhana	1347	4453	0	0	5800	0	30	25
4	Yavatmal	3748	9951	0	0	13699	0	173	237
5	Washim	735	2579	0	0	3314	0	33	30
*	<b>Amravati Range</b>	<b>9217</b>	<b>28364</b>	<b>0</b>	<b>0</b>	<b>37581</b>	<b>0</b>	<b>403</b>	<b>363</b>
6	Aurangabad Rural	1246	4237	0	1	5482	2	34	17
7	Jalna	884	3372	0	0	4256	0	38	21
8	Beed	1708	4864	0	1	6571	0	104	88
9	Osmanabad	1517	2825	0	1	4341	0	112	86
*	<b>Aurangabad Range</b>	<b>5355</b>	<b>15298</b>	<b>0</b>	<b>3</b>	<b>20650</b>	<b>2</b>	<b>288</b>	<b>212</b>
10	Nanded	1810	4600	0	1	6409	0	105	68
11	Latur	1037	4070	0	1	5106	0	85	89
12	Parbhani	1257	3606	0	0	4863	0	101	96
13	Hingoli	397	1761	0	0	2158	0	23	18
*	<b>Nanded Range</b>	<b>4501</b>	<b>14037</b>	<b>0</b>	<b>2</b>	<b>18536</b>	<b>0</b>	<b>314</b>	<b>271</b>
14	Kolhapur	1760	4942	0	0	6702	0	9	38
15	Pune Rural	5302	10334	0	1	15635	0	20	32
16	Sangli	1098	5171	0	0	6269	0	18	35
17	Satara	6221	6062	0	0	12283	0	180	174
18	Solapur Rural	2269	6235	0	2	8502	0	23	44
*	<b>Kolhapur Range</b>	<b>16650</b>	<b>32744</b>	<b>0</b>	<b>3</b>	<b>49391</b>	<b>0</b>	<b>250</b>	<b>323</b>
19	Bhandara	537	2003	0	0	2540	0	9	32
20	Chandrapur	1209	4441	0	1	5649	0	9	37
21	Nagpur Rural	1214	4564	0	0	5778	0	20	17
22	Wardha	1187	3687	0	0	4874	0	13	29
*	<b>Nagpur Range</b>	<b>4147</b>	<b>14695</b>	<b>0</b>	<b>1</b>	<b>18841</b>	<b>0</b>	<b>51</b>	<b>115</b>
23	Gadchiroli	854	875	0	0	1729	0	1	4
24	Gondia	561	1836	0	0	2397	0	6	22
*	<b>Gadchiroli Range</b>	<b>1415</b>	<b>2711</b>	<b>0</b>	<b>0</b>	<b>4126</b>	<b>0</b>	<b>7</b>	<b>26</b>
25	Ahmednagar	3537	6957	0	1	10493	0	78	146
26	Dhule	1121	2818	0	0	3939	0	29	21
27	Jalgaon	1894	6531	0	0	8425	0	110	136
28	Nasik Rural	2940	6832	0	6	9766	0	108	30
29	Nandurbar	524	1425	0	0	1949	0	29	27
*	<b>Nasik Range</b>	<b>10016</b>	<b>24563</b>	<b>0</b>	<b>7</b>	<b>34572</b>	<b>0</b>	<b>354</b>	<b>360</b>
30	Raigad	1106	2601	0	1	3706	0	12	26
31	Ratnagiri	792	1568	0	0	2360	0	2	18
32	Sindhudurg	387	789	0	1	1175	0	12	19
33	Thane Rural	1677	3641	0	4	5314	0	6	24
34	Palghar	2355	4692	0	0	7047	0	20	64
*	<b>Thane Range</b>	<b>6317</b>	<b>13291</b>	<b>0</b>	<b>6</b>	<b>19602</b>	<b>0</b>	<b>52</b>	<b>151</b>
35	Mumbai Railway	686	3141	0	2	3825	0	4	31
36	Pune Railway	365	676	0	0	1041	0	1	2
37	Nagpur Railway	630	1768	0	0	2398	0	12	0
*	<b>Railway Range</b>	<b>1681</b>	<b>5585</b>	<b>0</b>	<b>2</b>	<b>7264</b>	<b>0</b>	<b>17</b>	<b>33</b>
38	Nagpur Commr.	4458	10359	0	0	14817	0	58	135
39	Pune Commr.	4583	14468	0	9	19042	0	40	346
40	Thane Commr.	6732	13227	0	0	19959	0	447	227
41	Mumbai Commr.	51020	40361	39	162	91180	33	42	242
42	Nasik Commr.	1462	3883	0	0	5345	0	10	30
43	Aurangabad Commr.	1741	4821	0	0	6562	6	48	105
44	Solapur Commr.	880	2186	0	0	3066	0	5	12
45	Navi Mumbai	1758	5903	0	0	7661	0	21	113
46	Amravati Commr.	980	3338	0	0	4318	0	23	50
*	<b>Total Commrs.</b>	<b>73614</b>	<b>98546</b>	<b>39</b>	<b>171</b>	<b>171950</b>	<b>39</b>	<b>694</b>	<b>1260</b>
*	<b>Total of M.S</b>	<b>132913</b>	<b>249834</b>	<b>39</b>	<b>195</b>	<b>382513</b>	<b>41</b>	<b>2430</b>	<b>3114</b>

Table No. 15 (Concluded)

Sr.No.	Unit	Cases in ended as final report as Non Cognizable Submitted during the year	Cases in which charge-sheets were submitted	Cases in which charge-sheets were not laid but final report as True submitted during the year	Total cases Disposed off by police (Col. 8+9+10+11+12+13)	Cases pending investigation at the end of the year	Charge-sheeting Rate Col.12/(Col.12+13)*100	Cases Pendency Rate {Col.15/(3+4)} x 100
1	2	11	12	13	14	15	16	17
1	Akola	27	3212	725	4085	1777	81.58	30.3
2	Amravati Rural	74	5350	1204	6745	2161	81.63	24.3
3	Buldhana	69	3991	628	4743	1057	86.4	18.2
4	Yavatmal	167	7248	1835	9660	4039	79.8	29.5
5	Washim	49	1844	451	2407	907	80.35	27.4
*	<b>Amravati Range</b>	<b>386</b>	<b>21645</b>	<b>4843</b>	<b>27640</b>	<b>9941</b>	<b>81.72</b>	<b>26.5</b>
6	Aurangabad Rural	15	3840	693	4601	881	84.71	16.1
7	Jalna	32	2375	420	2886	1370	84.97	32.2
8	Beed	86	3936	871	5085	1486	81.88	22.6
9	Osmanabad	34	2392	638	3262	1079	78.94	24.9
*	<b>Aurangabad Range</b>	<b>167</b>	<b>12543</b>	<b>2622</b>	<b>15834</b>	<b>4816</b>	<b>82.71</b>	<b>23.3</b>
10	Nanded	54	4422	737	5386	1023	85.71	16
11	Latur	39	3329	672	4214	892	83.2	17.5
12	Parbhani	34	2968	563	3762	1101	84.06	22.6
13	Hingoli	18	1417	133	1609	549	91.42	25.4
*	<b>Nanded Range</b>	<b>145</b>	<b>12136</b>	<b>2105</b>	<b>14971</b>	<b>3565</b>	<b>85.22</b>	<b>19.2</b>
14	Kolhapur	12	3582	1076	4717	1985	76.9	29.6
15	Pune Rural	23	4786	2469	7330	8305	65.97	53.1
16	Sangli	76	3937	615	4681	1588	86.49	25.3
17	Satara	51	3925	5737	10067	2216	40.62	18
18	Solapur Rural	54	4605	936	5662	2840	83.11	33.4
*	<b>Kolhapur Range</b>	<b>216</b>	<b>20835</b>	<b>10833</b>	<b>32457</b>	<b>16934</b>	<b>65.79</b>	<b>34.3</b>
19	Bhandara	6	1494	486	2027	513	75.45	20.2
20	Chandrapur	68	3465	631	4210	1439	84.59	25.5
21	Nagpur Rural	6	3413	1004	4460	1318	77.27	22.8
22	Wardha	21	2752	615	3430	1444	81.73	29.6
*	<b>Nagpur Range</b>	<b>101</b>	<b>11124</b>	<b>2736</b>	<b>14127</b>	<b>4714</b>	<b>80.26</b>	<b>25</b>
23	Gadchiroli	0	670	173	848	881	79.48	51
24	Gondia	3	1401	477	1909	488	74.6	20.4
*	<b>Gadchiroli Range</b>	<b>3</b>	<b>2071</b>	<b>650</b>	<b>2757</b>	<b>1369</b>	<b>76.11</b>	<b>33.2</b>
25	Ahmednagar	182	4407	2285	7098	3395	65.85	32.4
26	Dhule	13	2191	538	2792	1147	80.29	29.1
27	Jalgaon	129	5495	1199	7069	1356	82.09	16.1
28	Nasik Rural	258	6180	1529	8105	1661	80.17	17
29	Nandurbar	38	1150	193	1437	512	85.63	26.3
*	<b>Nasik Range</b>	<b>620</b>	<b>19423</b>	<b>5744</b>	<b>26501</b>	<b>8071</b>	<b>77.18</b>	<b>23.3</b>
30	Raigad	71	1668	445	2222	1484	78.94	40
31	Ratnagiri	1	1261	512	1794	566	71.12	24
32	Sindhudurg	38	584	163	816	359	78.18	30.5
33	Thane Rural	5	1921	1338	3294	2020	58.94	38
34	Palghar	12	2471	1686	4253	2794	59.44	39.6
*	<b>Thane Range</b>	<b>127</b>	<b>7905</b>	<b>4144</b>	<b>12379</b>	<b>7223</b>	<b>65.61</b>	<b>36.8</b>
35	Mumbai Railway	4	1769	1064	2872	953	62.44	24.9
36	Pune Railway	0	249	353	605	436	41.36	41.9
37	Nagpur Railway	0	398	1328	1738	660	23.06	27.5
*	<b>Railway Range</b>	<b>4</b>	<b>2416</b>	<b>2745</b>	<b>5215</b>	<b>2049</b>	<b>46.81</b>	<b>28.2</b>
38	Nagpur Commr.	27	5809	4206	10235	4582	58	30.9
39	Pune Commr.	17	7063	5473	12939	6103	56.34	32
40	Thane Commr.	101	6673	5429	12877	7082	55.14	35.5
41	Mumbai Commr.	110	20246	8706	29379	61801	69.93	67.6
42	Nasik Commr.	26	2697	1153	3916	1429	70.05	26.7
43	Aurangabad Commr.	33	3142	1596	4930	1632	66.31	24.9
44	Solapur Commr.	4	1427	701	2149	917	67.06	29.9
45	Navi Mumbai	44	3601	1775	5554	2107	66.98	27.5
46	Amravati Commr.	15	2236	863	3187	1131	72.15	26.2
*	<b>Total Commrs.</b>	<b>377</b>	<b>52894</b>	<b>29902</b>	<b>85166</b>	<b>86784</b>	<b>63.88</b>	<b>50.4</b>
*	<b>Total of M.S</b>	<b>2146</b>	<b>162992</b>	<b>66324</b>	<b>237047</b>	<b>145466</b>	<b>71.08</b>	<b>38</b>

तक्ता क्र. १६

सन २०१४ मध्ये विशेष व स्थानिक कायद्यांतर्गत गुन्ह्यांची पोलीसांकडून निर्गती

Table No. 16

DISPOSAL OF SLL CRIME CASES BY POLICE DURING 2014

Sr. No.	Crime Head	Cases pending investigation from previous year	Cases reported during the year (156(3) Cr.P.C. + Police Stations)	No of cases withdrawn by the Govt during investigation	Cases transferred to other Police Station or Magistrate
1	2	3	4	5	6
1	Arms Act, 1959	1423	1412	0	9
2	Narcotic Drugs & Psychotropic Substances Act, 1985	953	14622	0	0
3	Gambling Act, 1867	5299	16637	0	0
4	Excise Act, 1944	0	0	0	0
5	Prohibition Act	32777	62772	0	0
6	Explosives and Explosive Substances Act	53	33	0	0
7	Immoral Traffic (Prevention) Act, 1956	743	233	0	0
8	Indian Railways Act, 1989	16	33	0	1
9	Registration of Foreigners Act, 1939	13	7	0	0
10	Protection of Civil Rights Act, 1955	15	5	0	0
10.1	PCR Act for crimes committed against SCs	11	5	0	0
10.2	PCR Act for crimes committed against STs	4	0	0	0
10.3	PCR Act for crimes committed against Others	0	0	0	0
11	Passport Act, 1967	31	69	0	0
12	Essential Commodities Act, 1955	816	1005	0	0
13	Antiquities & Art Treasures Act, 1972	2	1	0	0
14	Dowry Prohibition Act, 1961	10	39	0	0
15	Indecent Representation of Women (Prohibition) Act, 1986	0	0	0	0
16	Copyright Act, 1957	337	296	2	1
17	Commission of Sati Prevention Act 1987	0	0	0	0
18	SC/ST (Prevention of Atrocities) Act, 1989)	184	384	0	1
18.1	POA Act for crimes committed against SCs	152	329	0	1
18.2	POA Act for crimes committed against STs	32	55	0	0
19	Forest Act, 1927	18	25	0	0
20	Prohibition of Child Marriage Act, 2006	4	14	0	0
21	Protection of Women from Domestic Violence Act, 2005	3	4	0	0
22	Information Technology Act, 2000	220	511	0	0
23	Official Secrets Act, 1923	0	1	0	0
24	Electricity Act, 2003	694	1140	0	6
25	Wildlife Protection Act, 1972	34	56	0	0
26	Bonded Labour System (Abolition) Act, 1976	1	4	0	0
27	Environmental (Protection) Act, 1986	40	41	0	0

Table No. 16 (Continued)

Sr. No.	Crime Head	Cases pending investigation from previous year	Cases reported during the year (156(3) Cr.P.C. + Police Stations)	No of cases withdrawn by the Govt during investigation	Cases transferred to other Police Station or Magistrate
1	2	3	4	5	6
28	Air (Prevention & Control of Pollution) Act, 1981	3	13	0	0
29	Water (Prevention & Control of Pollution) Act, 1974(as amended in 1988)	0	1	0	0
30	National Security Act, 1980	0	0	0	0
31	Unlawful Activities (Prevention) Act, 1967	2	1	0	0
32	Young Persons (Harmful Publications) Act, 1956	0	0	0	0
33	Railway Property (Unlawful Possession) Act, 1966	0	0	0	0
34	Prevention of Damage to Public Property Act, 1984	66	232	0	0
35	Transplantation of Human Organs Act, 1994	0	0	0	0
36	Trade Marks Act, 1999	0	3	0	0
37	Prevention of Insults to National Honour Act, 1971	2	18	0	0
38	State Emblem (Prohibition of Improper Use) Act, 2005	0	0	0	0
39	Lotteries (Regulation) Act, 1998	4	53	0	0
40	Citizenship Act, 1955	0	0	0	0
41	Foreigners Act, 1946	1	17	0	0
42	Place of Worship (Special Provisions) Act, 1991	0	0	0	0
43	Religious Institution (Prevention of Misuse) Act, 1988	0	1	0	0
44	Representation of People Act, 1951	3	61	0	0
45	Emigration Act, 1983	0	0	0	0
46	Juvenile Justice (Care and Protection of Children) Act, 2000	3	40	0	0
47	Infant Substitutes Regulation Act, 2003	0	0	0	0
48	Anti-Hijacking Act, 1982	0	0	0	0
49	Atomic Energy Act, 1962	0	1	0	0
50	Weapons of Mass Destruction (Proh. of Unlawful Activities) Act, 2005	0	0	0	0
51	Suppression of Unlawful Acts against Safety of Civil Aviation Act, 1982	0	0	0	0
52	Safety of Maritime Navigation Act, 2002	0	0	0	0
53	Manual Scavengers and Construction of Dry Latrines (P) Act, 1993	0	0	0	0
54	Pre-Natal Diagnostic Techniques (Reg and Prev of Misuse) Act, 1994	1	1	0	0
55	The Maritime Zones of India (Reg of Fishing by Foreign Vessels) Act, 1981	0	0	0	0
56	Other SLL crimes	10813	35195	0	1
57	<b>Total Cognizable SLL crimes</b>	<b>54584</b>	<b>134981</b>	<b>2</b>	<b>19</b>

तक्ता क्र. १६ (चालू)

Table No. 16 (Continued)

Sr. No.	Crime Head	Total Cases for investigation (Col. 3+4 - 5 - 6)	Cases not investigated U/S 157(1)(b) of Cr.PC	Cases ended as final report false	Cases ended as mistake of fact or of law	Cases in ended as final report as Non Cognizable Submitted
1	2	7	8	9	10	11
1	Arms Act, 1959	2826	0	1	3	0
2	Narcotic Drugs & Psychotropic Substances Act, 1985	15575	0	2	0	0
3	Gambling Act, 1867	21936	0	0	0	3
4	Excise Act, 1944	0	0	0	0	0
5	Prohibition Act	95549	132	1	2	10
6	Explosives and Explosive Substances Act	86	0	1	1	0
7	Immoral Traffic (Prevention) Act, 1956	976	0	0	0	0
8	Indian Railways Act, 1989	48	0	0	0	1
9	Registration of Foreigners Act, 1939	20	0	0	0	0
10	Protection of Civil Rights Act, 1955	20	0	0	0	0
10.1	PCR Act for crimes committed against SCs	16	0	0	0	0
10.2	PCR Act for crimes committed against STs	4	0	0	0	0
10.3	PCR Act for crimes committed against Others	0	0	0	0	0
11	Passport Act, 1967	100	0	0	0	0
12	Essential Commodities Act, 1955	1821	0	1	12	1
13	Antiquities & Art Treasures Act, 1972	3	0	0	0	0
14	Dowry Prohibition Act, 1961	49	0	0	0	0
15	Indecent Representation of Women (Prohibition) Act, 1986	0	0	0	0	0
16	Copyright Act, 1957	630	0	2	0	0
17	Commission of Sati Prevention Act 1987	0	0	0	0	0
18	SC/ST (Prevention of Atrocities) Act, 1989)	567	0	60	8	18
18.1	POA Act for crimes committed against SCs	480	0	50	7	16
18.2	POA Act for crimes committed against STs	87	0	10	1	2
19	Forest Act, 1927	43	0	0	1	0
20	Prohibition of Child Marriage Act, 2006	18	0	0	1	0
21	Protection of Women from Domestic Violence Act, 2005	7	0	0	0	0
22	Information Technology Act, 2000	731	0	2	11	24
23	Official Secrets Act, 1923	1	0	0	0	0
24	Electricity Act, 2003	1828	0	0	43	1
25	Wildlife Protection Act, 1972	90	0	0	1	0
26	Bonded Labour System (Abolition) Act, 1976	5	0	0	0	0
27	Environmental (Protection) Act, 1986	81	0	0	0	0



Table No. 16 (Continued)

Sr. No.	Crime Head	Total Cases for investigation (Col. 3+4 - 5 - 6)	Cases not investigated U/S 157(1)(b) of Cr.PC	Cases ended as final report false	Cases ended as mistake of fact or of law	Cases in ended as final report as Non Cognizable Submitted
1	2	7	8	9	10	11
28	Air (Prevention & Control of Pollution) Act, 1981	16	0	0	0	0
29	Water (Prevention & Control of Pollution) Act, 1974(as amended in 1988)	1	0	0	0	0
30	National Security Act, 1980	0	0	0	0	0
31	Unlawful Activities (Prevention) Act, 1967	3	0	0	0	0
32	Young Persons (Harmful Publications) Act, 1956	0	0	0	0	0
33	Railway Property (Unlawful Possession) Act, 1966	0	0	0	0	0
34	Prevention of Damage to Public Property Act, 1984	298	0	1	1	0
35	Transplantation of Human Organs Act, 1994	0	0	0	0	0
36	Trade Marks Act, 1999	3	0	0	0	0
37	Prevention of Insults to National Honour Act, 1971	20	0	0	2	0
38	State Emblem (Prohibition of Improper Use) Act, 2005	0	0	0	0	0
39	Lotteries (Regulation) Act, 1998	57	0	0	0	0
40	Citizenship Act, 1955	0	0	0	0	0
41	Foreigners Act, 1946	18	0	0	0	0
42	Place of Worship (Special Provisions) Act, 1991	0	0	0	0	0
43	Religious Institution (Prevention of Misuse) Act, 1988	1	0	0	0	0
44	Representation of People Act, 1951	64	0	0	5	0
45	Emigration Act, 1983	0	0	0	0	0
46	Juvenile Justice (Care and Protection of Children) Act, 2000	43	0	0	0	0
47	Infant Substitutes Regulation Act, 2003	0	0	0	0	0
48	Anti-Hijacking Act, 1982	0	0	0	0	0
49	Atomic Energy Act, 1962	1	0	0	0	0
50	Weapons of Mass Destruction (Proh. of Unlawful Activities) Act, 2005	0	0	0	0	0
51	Suppression of Unlawful Acts against Safety of Civil Aviation Act, 1982	0	0	0	0	0
52	Safety of Maritime Navigation Act, 2002	0	0	0	0	0
53	Manual Scavengers and Construction of Dry Latrines (P) Act, 1993	0	0	0	0	0
54	Pre-Natal Diagnostic Techniques (Reg and Prev of Misuse) Act, 1994	2	0	0	0	0
55	The Maritime Zones of India (Reg of Fishing by Foreign Vessels) Act, 1981	0	0	0	0	0
56	Other SLL crimes	46007	0	17	54	35
57	<b>Total Cognizable SLL crimes</b>	<b>189544</b>	<b>132</b>	<b>88</b>	<b>145</b>	<b>93</b>

Table No. 16 (Continued)

Sr No.	Crime Head	Cases in which charge-sheets were submitted	Cases in which charge-sheets were not laid but final report as True submitted during the year	Total cases Disposed off by police (Col. 8+9+10+11+12+13)	Cases pending investigation on at the end of the year	Cases Chargeshet Rate {Col.12/(12+13)} x 100	Cases Pendency Rate {Col.15/(3+4)} x 100
1	2	12	13	14	15	16	17
1	Arms Act, 1959	1270	18	1292	1534	98.6	54.1
2	Narcotic Drugs & Psychotropic Substances Act, 1985	10490	28	10520	5055	99.7	32.5
3	Gambling Act, 1867	16190	19	16212	5724	99.9	26.1
4	Excise Act, 1944	0	0	0	0	0	0
5	Prohibition Act	61923	335	62403	33146	99.5	34.7
6	Explosives and Explosive Substances Act	32	5	39	47	86.5	54.7
7	Immoral Traffic (Prevention) Act, 1956	235	4	239	737	98.3	75.5
8	Indian Railways Act, 1989	4	21	26	22	16	44.9
9	Registration of Foreigners Act, 1939	8	0	8	12	100	60
10	Protection of Civil Rights Act, 1955	13	0	13	7	100	35
10.1	PCR Act for crimes committed against SCs	9	0	9	7	100	43.8
10.2	PCR Act for crimes committed against STs	4	0	4	0	100	0
10.3	PCR Act for crimes committed against Others	0	0	0	0	0	0
11	Passport Act, 1967	70	0	70	30	100	30
12	Essential Commodities Act, 1955	1067	13	1094	727	98.8	39.9
13	Antiquities & Art Treasures Act, 1972	2	0	2	1	100	33.3
14	Dowry Prohibition Act, 1961	35	0	35	14	100	28.6
15	Indecent Representation of Women (Prohibition) Act, 1986	0	0	0	0	0	0
16	Copyright Act, 1957	296	13	311	319	95.8	50.4
17	Commission of Sati Prevention Act 1987	0	0	0	0	0	0
18	SC/ST (Prevention of Atrocities) Act, 1989)	314	4	404	163	98.7	28.7
18.1	POA Act for crimes committed against SCs	260	4	337	143	98.5	29.7
18.2	POA Act for crimes committed against STs	54	0	67	20	100	23
19	Forest Act, 1927	28	1	30	13	96.6	30.2
20	Prohibition of Child Marriage Act, 2006	7	0	8	10	100	55.6
21	Protection of Women from Domestic Violence Act, 2005	3	0	3	4	100	57.1
22	Information Technology Act, 2000	124	131	292	439	48.6	60.1
23	Official Secrets Act, 1923	1	0	1	0	100	0
24	Electricity Act, 2003	211	951	1206	622	18.2	33.9
25	Wildlife Protection Act, 1972	34	11	46	44	75.6	48.9
26	Bonded Labour System (Abolition) Act, 1976	2	1	3	2	66.7	40
27	Environmental (Protection) Act, 1986	23	2	25	56	92	69.1

Table No. 16 (Concluded)

Sr No.	Crime Head	Cases in which charge-sheets were submitted	Cases in which charge-sheets were not laid but final report as True submitted during the year	Total cases Disposed off by police (Col. 8+9+10+11+12+13)	Cases pending investigation at the end of the year	Cases Chargesheet Rate {Col.12/(12+13)} x 100	Cases Pendency Rate {Col.15/(3+4)} x 100
1	2	12	13	14	15	16	17
28	Air (Prevention & Control of Pollution) Act, 1981	8	0	8	8	100	50
29	Water (Prevention & Control of Pollution) Act, 1974(as amended in 1988)	0	0	0	1	0	100
30	National Security Act, 1980	0	0	0	0	0	0
31	Unlawful Activities (Prevention) Act, 1967	1	1	2	1	50	33.3
32	Young Persons (Harmful Publications) Act, 1956	0	0	0	0	0	0
33	Railway Property (Unlawful Possession) Act, 1966	0	0	0	0	0	0
34	Prevention of Damage to Public Property Act, 1984	122	52	176	122	70.1	40.9
35	Transplantation of Human Organs Act, 1994	0	0	0	0	0	0
36	Trade Marks Act, 1999	0	1	1	2	0	66.7
37	Prevention of Insults to National Honour Act, 1971	11	1	14	6	91.7	30
38	State Emblem (Prohibition of Improper Use) Act, 2005	0	0	0	0	0	0
39	Lotteries (Regulation) Act, 1998	24	0	24	33	100	57.9
40	Citizenship Act, 1955	0	0	0	0	0	0
41	Foreigners Act, 1946	13	0	13	5	100	27.8
42	Place of Worship (Special Provisions) Act, 1991	0	0	0	0	0	0
43	Religious Institution (Prevention of Misuse) Act, 1988	1	0	1	0	100	0
44	Representation of People Act, 1951	30	4	39	25	88.2	39.1
45	Emigration Act, 1983	0	0	0	0	0	0
46	Juvenile Justice (Care and Protection of Children) Act, 2000	16	0	16	27	100	62.8
47	Infant Substitutes Regulation Act, 2003	0	0	0	0	0	0
48	Anti-Hijacking Act, 1982	0	0	0	0	0	0
49	Atomic Energy Act, 1962	1	0	1	0	100	0
50	Weapons of Mass Destruction (Proh. of Unlawful Activities) Act, 2005	0	0	0	0	0	0
51	Suppression of Unlawful Acts against Safety of Civil Aviation Act, 1982	0	0	0	0	0	0
52	Safety of Maritime Navigation Act, 2002	0	0	0	0	0	0
53	Manual Scavengers and Construction of Dry Latrines (P) Act, 1993	0	0	0	0	0	0
54	Pre-Natal Diagnostic Techniques (Reg and Prev of Misuse) Act, 1994	1	0	1	1	100	50
55	The Maritime Zones of India (Reg of Fishing by Foreign Vessels) Act, 1981	0	0	0	0	0	0
56	Other SLL crimes	33898	886	34890	11117	97.5	24.2
57	<b>Total Cognizable SLL crimes</b>	<b>126508</b>	<b>2502</b>	<b>129468</b>	<b>60076</b>	<b>98.1</b>	<b>31.7</b>

तक्ता क्र. १७

सन २०१४ मध्ये पोलिसांकडून विशेष व स्थानिक कायद्यांतर्गत गुन्ह्यांची निर्गती - घटक निहाय

Table No. 17

DISPOSAL OF SLL CASES BY POLICE DURING 2014 (UNIT-WISE)

Sr.No.	Unit	Cases pending investigation from previous year	Cases reported during the year (156(3) Cr.P.C. + Police Stations)	No. of cases withdrawn by the Govt. during investigation	Cases transferred to other Police Station/ Magistrate	Total Cases for investigation (Col. 3+4 - 5 - 6)	Cases not investigated U/S 157(1)(b) of Cr.PC	Cases ended as final report false	Cases ended as mistake of fact or of law
1	2	3	4	5	6	7	8	9	10
1	Akola	583	2451	0	0	3034	0	8	0
2	Amravati Rural	515	4522	0	0	5037	11	4	0
3	Buldhana	614	4385	0	0	4999	0	2	4
4	Yavatmal	1074	5133	0	0	6207	1	2	48
5	Washim	291	1599	0	0	1890	0	0	3
*	<b>Amravati Range</b>	<b>3077</b>	<b>18090</b>	<b>0</b>	<b>0</b>	<b>21167</b>	<b>12</b>	<b>16</b>	<b>55</b>
6	Aurangabad Rural	358	2218	0	0	2576	0	1	1
7	Jalna	319	1497	0	0	1816	0	1	0
8	Beed	803	2344	0	0	3147	0	5	3
9	Osmanabad	416	1583	0	1	1998	0	1	0
*	<b>Aurangabad Range</b>	<b>1896</b>	<b>7642</b>	<b>0</b>	<b>1</b>	<b>9537</b>	<b>0</b>	<b>8</b>	<b>4</b>
10	Nanded	549	2411	0	0	2960	0	5	2
11	Latur	246	2082	0	0	2328	0	0	4
12	Parbhani	251	2078	0	0	2329	0	7	3
13	Hingoli	132	1172	0	0	1304	0	0	1
*	<b>Nanded Range</b>	<b>1178</b>	<b>7743</b>	<b>0</b>	<b>0</b>	<b>8921</b>	<b>0</b>	<b>12</b>	<b>10</b>
14	Kolhapur	425	2062	0	0	2487	0	0	2
15	Pune Rural	1268	2547	0	0	3815	0	2	0
16	Sangli	381	1243	0	0	1624	0	3	4
17	Satara	822	2010	0	0	2832	0	7	12
18	Solapur Rural	905	3265	0	5	4165	0	2	0
*	<b>Kolhapur Range</b>	<b>3801</b>	<b>11127</b>	<b>0</b>	<b>5</b>	<b>14923</b>	<b>0</b>	<b>14</b>	<b>18</b>
19	Bhandara	687	2847	0	0	3534	0	0	1
20	Chandrapur	411	2882	0	0	3293	0	0	0
21	Nagpur Rural	665	3577	0	0	4242	0	0	2
22	Wardha	2298	10755	0	0	13053	0	0	0
*	<b>Nagpur Range</b>	<b>4061</b>	<b>20061</b>	<b>0</b>	<b>0</b>	<b>24122</b>	<b>0</b>	<b>0</b>	<b>3</b>
23	Gadchiroli	743	1687	0	0	2430	0	1	1
24	Gondia	130	1459	0	0	1589	0	1	0
*	<b>Gadchiroli Range</b>	<b>873</b>	<b>3146</b>	<b>0</b>	<b>0</b>	<b>4019</b>	<b>0</b>	<b>2</b>	<b>1</b>
25	Ahmednagar	834	2797	0	0	3631	0	0	0
26	Dhule	200	1894	0	0	2094	0	1	0
27	Jalgaon	464	3354	0	0	3818	0	3	3
28	Nasik Rural	430	2246	0	0	2676	7	6	10
29	Nandurbar	182	1029	0	0	1211	0	1	0
*	<b>Nasik Range</b>	<b>2110</b>	<b>11320</b>	<b>0</b>	<b>0</b>	<b>13430</b>	<b>7</b>	<b>11</b>	<b>13</b>
30	Raigad	210	741	0	0	951	43	0	2
31	Ratnagiri	130	624	0	0	754	0	0	2
32	Sindhudurg	87	425	0	0	512	3	0	0
33	Thane Rural	280	789	0	0	1069	0	0	0
34	Palghar	373	601	0	0	974	0	1	2
*	<b>Thane Range</b>	<b>1080</b>	<b>3180</b>	<b>0</b>	<b>0</b>	<b>4260</b>	<b>46</b>	<b>1</b>	<b>6</b>
35	Mumbai Railway	31	143	0	1	173	0	0	0
36	Pune Railway	12	68	0	0	80	0	0	0
37	Nagpur Railway	12	69	0	0	81	0	0	0
*	<b>Railway Range</b>	<b>55</b>	<b>280</b>	<b>0</b>	<b>1</b>	<b>334</b>	<b>0</b>	<b>0</b>	<b>0</b>
38	Nagpur Commr.	2546	17307	0	0	19853	0	2	4
39	Pune Commr.	1845	7616	2	0	9459	0	6	11
40	Thane Commr.	1145	2505	0	0	3650	67	4	6
41	Mumbai Commr.	8060	19477	0	12	27525	0	1	2
42	Nasik Commr.	298	1030	0	0	1328	0	0	1
43	Aurangabad Commr.	296	1027	0	0	1323	0	4	2
44	Solapur Commr.	21903	1162	0	0	23065	0	0	0
45	Navi Mumbai	167	843	0	0	1010	0	6	2
46	Amravati Commr.	193	1425	0	0	1618	0	1	7
*	<b>Total Commrs.</b>	<b>36453</b>	<b>52392</b>	<b>2</b>	<b>12</b>	<b>88831</b>	<b>67</b>	<b>24</b>	<b>35</b>
*	<b>Total of M.S</b>	<b>54584</b>	<b>134981</b>	<b>2</b>	<b>19</b>	<b>189544</b>	<b>132</b>	<b>88</b>	<b>145</b>

Table No. 17 (Concluded)

Sr.No.	Unit	Cases in ended as final report as Non Cognizable Submitted during the year	Cases in which charge-sheets were submitted	Cases in which charge-sheets were not laid but final report as True submitted during the year	Total cases Disposed off by police (Col. 8+9+10+11+12+13)	Cases pending investigation at the end of the year	Charge-sheeting Rate Col.12/ (Col.12+13)* 100	Cases Pendency Rate {Col.15/ (3+4)} x 100
1	2	11	12	13	14	15	16	17
1	Akola	3	2509	89	2609	425	96.57	14
2	Amravati Rural	3	4349	94	4461	576	97.88	11.4
3	Buldhana	3	4428	34	4471	528	99.24	10.6
4	Yavatmal	27	4578	112	4768	1439	97.61	23.2
5	Washim	5	1600	21	1629	261	98.70	13.8
*	<b>Amravati Range</b>	<b>41</b>	<b>17464</b>	<b>350</b>	<b>17938</b>	<b>3229</b>	<b>98.04</b>	<b>15.3</b>
6	Aurangabad Rural	0	2382	7	2391	185	99.71	7.2
7	Jalna	1	1546	2	1550	266	99.87	14.6
8	Beed	2	2622	20	2652	495	99.24	15.7
9	Osmanabad	3	1710	11	1725	273	99.36	13.7
*	<b>Aurangabad Range</b>	<b>6</b>	<b>8260</b>	<b>40</b>	<b>8318</b>	<b>1219</b>	<b>99.52</b>	<b>12.8</b>
10	Nanded	8	2600	103	2718	242	96.19	8.2
11	Latur	3	2007	13	2027	301	99.36	12.9
12	Parbhani	1	2075	18	2104	225	99.14	9.7
13	Hingoli	1	1147	2	1151	153	99.83	11.7
*	<b>Nanded Range</b>	<b>13</b>	<b>7829</b>	<b>136</b>	<b>8000</b>	<b>921</b>	<b>98.29</b>	<b>10.3</b>
14	Kolhapur	3	2079	10	2094	393	99.52	15.8
15	Pune Rural	0	1941	152	2095	1720	92.74	45.1
16	Sangli	2	1081	5	1095	529	99.54	32.6
17	Satara	0	1879	636	2534	298	74.71	10.5
18	Solapur Rural	3	3109	4	3118	1047	99.87	25.1
*	<b>Kolhapur Range</b>	<b>8</b>	<b>10089</b>	<b>807</b>	<b>10936</b>	<b>3987</b>	<b>92.59</b>	<b>26.7</b>
19	Bhandara	1	2990	50	3042	492	98.36	13.9
20	Chandrapur	1	2849	22	2872	421	99.23	12.8
21	Nagpur Rural	0	3522	17	3541	701	99.52	16.5
22	Wardha	0	10185	32	10217	2836	99.69	21.7
*	<b>Nagpur Range</b>	<b>2</b>	<b>19546</b>	<b>121</b>	<b>19672</b>	<b>4450</b>	<b>99.38</b>	<b>18.4</b>
23	Gadchiroli	0	1684	8	1694	736	99.53	30.3
24	Gondia	0	1395	12	1408	181	99.15	11.4
*	<b>Gadchiroli Range</b>	<b>0</b>	<b>3079</b>	<b>20</b>	<b>3102</b>	<b>917</b>	<b>99.35</b>	<b>22.8</b>
25	Ahmednagar	0	2452	228	2680	951	91.49	26.2
26	Dhule	0	1692	31	1724	370	98.20	17.7
27	Jalgaon	2	3465	46	3519	299	98.69	7.8
28	Nasik Rural	6	2351	61	2441	235	97.47	8.8
29	Nandurbar	3	1033	2	1039	172	99.81	14.2
*	<b>Nasik Range</b>	<b>11</b>	<b>10993</b>	<b>368</b>	<b>11403</b>	<b>2027</b>	<b>96.76</b>	<b>15.1</b>
30	Raigad	1	576	3	625	326	99.48	34.3
31	Ratnagiri	2	668	3	675	79	99.55	10.5
32	Sindhudurg	1	395	12	411	101	97.05	19.7
33	Thane Rural	0	631	33	664	405	95.03	37.9
34	Palghar	0	559	31	593	381	94.75	39.1
*	<b>Thane Range</b>	<b>4</b>	<b>2829</b>	<b>82</b>	<b>2968</b>	<b>1292</b>	<b>97.18</b>	<b>30.3</b>
35	Mumbai Railway	1	123	28	152	21	81.46	12.1
36	Pune Railway	0	58	2	60	20	96.67	25
37	Nagpur Railway	0	47	20	67	14	70.15	17.3
*	<b>Railway Range</b>	<b>1</b>	<b>228</b>	<b>50</b>	<b>279</b>	<b>55</b>	<b>82.01</b>	<b>16.4</b>
38	Nagpur Commr.	2	16861	34	16903	2950	99.80	14.9
39	Pune Commr.	0	7269	149	7435	2024	97.99	21.4
40	Thane Commr.	3	2128	87	2295	1355	96.07	37.1
41	Mumbai Commr.	0	14535	187	14725	12800	98.73	46.5
42	Nasik Commr.	0	1053	4	1058	270	99.62	20.3
43	Aurangabad Commr.	0	1052	25	1083	240	97.68	18.1
44	Solapur Commr.	0	1102	6	1108	21957	99.46	95.2
45	Navi Mumbai	0	806	15	829	181	98.17	17.9
46	Amravati Commr.	2	1385	21	1416	202	98.51	12.5
*	<b>Total Commrs.</b>	<b>7</b>	<b>46191</b>	<b>528</b>	<b>46852</b>	<b>41979</b>	<b>98.87</b>	<b>47.2</b>
*	<b>Total of M.S</b>	<b>93</b>	<b>126508</b>	<b>2502</b>	<b>129468</b>	<b>60076</b>	<b>98.06</b>	<b>31.7</b>

तक्ता क्र. १८  
सन २०१४ मध्ये न्यायालयांकडून भा.दं.वि. कायद्यांतर्गत गुन्ह्यांची निर्गती - गुन्हे शिर्ष निहाय

Table 18  
Disposal of IPC Cases by Courts during 2014 (Crime Head-wise)

Sr.No	Crime Head	Cases pending trial from the previous year	Cases sent for trial during the year	No. of cases withdrawn by the Govt.	No. Of cases disposed by Plea Bargaining	Total no. Of cases for trial during the year Col.7=Col.3+4 - Col.5 - col. 6	Cases compounded or withdrawn
1	2	3	4	5	6	7	8
1	Murder	24843	2290	3	0	27130	5
2	Attempt to commit Murder	17607	2306	0	0	19913	19
3	Culpable Homicide not amounting to Murder	1195	142	0	0	1337	0
4	Attempt to commit Culpable Homicide	43	7	0	0	50	0
5	Rape	14909	3024	1	1	17931	25
6	Attempt to commit Rape	25	12	0	0	37	0
7	Kidnapping & Abduction_Total	11566	1507	0	0	13073	28
8	Dacoity	6115	761	0	0	6876	7
9	Making Preparation and Assembly for committing Dacoity	2664	277	0	0	2941	0
10	Robbery	27186	4694	0	1	31879	60
11	Criminal Trespass/Burglary_Total	67199	5136	0	0	72335	214
12	Theft	188222	17584	120	13	205673	2888
13	Unlawful Assembly	7618	908	2	0	8524	71
14	Riots	58698	7171	23	14	65832	761
15	Criminal Breach of Trust	21352	1275	2	3	22622	97
16	Cheating	52973	4849	5	6	57811	270
17	Forgery	1989	356	1	0	2344	8
18	Counterfeiting	858	77	0	0	935	3
19	Arson	7936	791	2	0	8725	53
20	Grievous Hurt	93090	7367	13	28	100416	2247
21	Dowry Deaths	3877	266	0	0	4143	3
22	Assault on women with intent to outrage her Modesty	31694	8464	1	2	40155	336
23	Insult to the Modesty of Women	10026	1622	0	2	11646	123
24	Cruelty by Husband or his Relatives	55595	7515	7	6	63097	985
25	Importation of Girls from Foreign Country	0	1	0	0	1	0
26	Causing Death by Negligence	82316	8226	40	2	90500	375
27	Offences against State	4	0	0	0	4	0
28	Offences promoting enmity between different groups	51	5	0	0	56	0
29	Extortion	3198	576	0	0	3774	23
30	Disclosure of Identity of Victims	23	0	0	0	23	0
31	Incidence of Rash Driving	128002	21326	102	17	149209	1781
32	Human Trafficking	38	48	0	0	86	6
33	Unnatural Offences	206	66	0	0	272	0
34	Other IPC crimes	448703	54343	194	236	502616	5104
35	<b>Total Cognizable IPC crimes</b>	<b>1369821</b>	<b>162992</b>	<b>516</b>	<b>331</b>	<b>1531966</b>	<b>15492</b>

Table No. 18 (Concluded)

Sr.No	Crime Head	Cases in which trials were completed (Col.9= Col. 10+11)	Cases convicted	Cases acquitted or discharged	Cases Pending Trial at the end of the year (Col.7 - (Col.8+9)	Cases Conviction Rate (Col. 10/9)x 100	Cases Pendency Rate (Col. 12/7)x 100
1	2	9	10	11	12	16	17
1	Murder	1582	435	1147	25543	27.5	94.2
2	Attempt to commit Murder	952	142	810	18942	14.9	95.1
3	Culpable Homicide not amounting to Murder	73	11	62	1264	15.1	94.5
4	Attempt to commit Culpable Homicide	14	0	14	36	0	72
5	Rape	1058	202	856	16848	19.1	94
6	Attempt to commit Rape	2	0	2	35	0	94.6
7	Kidnapping & Abduction_Total	624	29	595	12421	4.6	95
8	Dacoity	340	21	319	6529	6.2	95
9	Making Preparation and Assembly for committing Dacoity	155	1	154	2786	0.6	94.7
10	Robbery	2156	708	1448	29663	32.8	93
11	Criminal Trespass/Burglary_Total	3582	869	2713	68539	24.3	94.8
12	Theft	11800	2338	9462	190985	19.8	92.9
13	Unlawful Assembly	574	21	553	7879	3.7	92.4
14	Riots	4736	183	4553	60335	3.9	91.6
15	Criminal Breach of Trust	766	69	697	21759	9	96.2
16	Cheating	1776	200	1576	55765	11.3	96.5
17	Forgery	141	13	128	2195	9.2	93.6
18	Counterfeiting	38	14	24	894	36.8	95.6
19	Arson	556	23	533	8116	4.1	93
20	Grievous Hurt	6060	513	5547	92109	8.5	91.7
21	Dowry Deaths	198	19	179	3942	9.6	95.1
22	Assault on women with intent to outrage her Modesty	2722	394	2328	37097	14.5	92.4
23	Insult to the Modesty of Women	636	51	585	10887	8	93.5
24	Cruelty by Husband or his Relatives	4738	113	4625	57374	2.4	90.9
25	Importation of Girls from Foreign Country	0	0	0	1	0	100
26	Causing Death by Negligence	6242	376	5866	83883	6	92.7
27	Offences against State	1	0	1	3	0	75
28	Offences promoting enmity between different groups	3	0	3	53	0	94.6
29	Extortion	233	12	221	3518	5.2	93.2
30	Disclosure of Identity of Victims	0	0	0	23	0	100
31	Incidence of Rash Driving	16248	4302	11946	131180	26.5	87.9
32	Human Trafficking	5	1	4	75	20	87.2
33	Unnatural Offences	14	2	12	258	14.3	94.9
34	Other IPC crimes	36957	9222	27735	460555	25	91.6
<b>35</b>	<b>Total Cognizable IPC crimes</b>	<b>104982</b>	<b>20284</b>	<b>84698</b>	<b>1411492</b>	<b>19.3</b>	<b>92.1</b>

तक्ता क्र. १९

सन २०१४ मध्ये न्यायालयांकडून भा.दं.वि. खटल्यांची निर्गती - घटक निहाय

Table No. 19

DISPOSAL OF IPC CASES BY COURTS DURING - 2014 (UNIT-WISE)

Sr No.	Unit	Cases pending trial from the previous year	Cases sent for trial during the year	No of cases withdrawn by the Govt during investigation	Cases disposed off by Plea Bargaining	Cases for Trial during the year	Cases compounded or withdrawn
1	2	3	4	5	6	7	8
1	Akola	19845	3212	0	0	23057	517.00
2	Amravati Rural	23997	5350	0	0	29347	172.00
3	Buldhana	22050	3991	3	0	26038	194.00
4	Yavatmal	48958	7248	0	0	56206	132.00
5	Washim	5724	1844	0	0	7568	314.00
	<b>Amravati Range</b>	<b>120574</b>	<b>21645</b>	<b>3</b>	<b>0</b>	<b>142216</b>	<b>1329.00</b>
6	Aurangabad Rural	24197	3840	0	0	28037	271.00
7	Jalna	19442	2375	0	0	21817	322.00
8	Beed	17712	3936	0	0	21648	404.00
9	Osmanabad	13582	2392	0	0	15974	78.00
	<b>Aurangabad Range</b>	<b>74933</b>	<b>12543</b>	<b>0</b>	<b>0</b>	<b>87476</b>	<b>1075.00</b>
10	Nanded	38794	4422	0	0	43216	88.00
11	Latur	37371	3329	0	0	40700	250.00
12	Parbhani	16176	2968	0	0	19144	92.00
13	Hingoli	11535	1417	0	0	12952	233.00
	<b>Nanded Range</b>	<b>103876</b>	<b>12136</b>	<b>0</b>	<b>0</b>	<b>116012</b>	<b>663.00</b>
14	Kolhapur	29793	3582	0	0	33375	53.00
15	Pune Rural	46284	4786	68	0	51002	416.00
16	Sangli	20822	3937	0	0	24759	178.00
17	Satara	20729	3925	0	0	24654	173.00
18	Solapur Rural	45264	4605	62	0	49807	462.00
	<b>Kolhapur Range</b>	<b>162892</b>	<b>20835</b>	<b>130</b>	<b>0</b>	<b>183597</b>	<b>1282.00</b>
19	Bhandara	9206	1494	3	0	10697	603.00
20	Chandrapur	23767	3465	0	39	27193	0.00
21	Nagpur Rural	40303	3413	0	0	43716	628.00
22	Wardha	14807	2752	0	0	17559	105.00
	<b>Nagpur Range</b>	<b>88083</b>	<b>11124</b>	<b>3</b>	<b>39</b>	<b>99165</b>	<b>1336.00</b>
23	Gadchiroli	2774	670	0	0	3444	9.00
24	Gondia	6135	1401	0	0	7536	317.00
	<b>Gadchiroli Range</b>	<b>8909</b>	<b>2071</b>	<b>0</b>	<b>0</b>	<b>10980</b>	<b>326.00</b>
25	Ahmednagar	49047	4407	0	0	53454	880.00
26	Dhule	16859	2191	0	0	19050	36.00
27	Jalgaon	35634	5495	0	0	41129	278.00
28	Nasik Rural	38030	6180	6	122	44082	200.00
29	Nandurbar	6733	1150	2	131	7750	136.00
	<b>Nasik Range</b>	<b>146303</b>	<b>19423</b>	<b>8</b>	<b>253</b>	<b>165465</b>	<b>1530.00</b>
30	Raigad	12420	1668	234	1	13853	362.00
31	Ratnagiri	4217	1261	0	0	5478	0.00
32	Sindhudurg	2253	584	0	0	2837	11.00
33	Thane Rural	20737	1921	0	0	22658	159.00
34	Palghar	26550	2471	0	0	29021	56.00
	<b>Thane Range</b>	<b>66177</b>	<b>7905</b>	<b>234</b>	<b>1</b>	<b>73847</b>	<b>588.00</b>
35	Mumbai Railway	10654	1769	0	0	12423	1020.00
36	Pune Railway	937	249	0	0	1186	23.00
37	Nagpur Railway	5288	398	0	0	5686	124.00
	<b>Railway Range</b>	<b>16879</b>	<b>2416</b>	<b>0</b>	<b>0</b>	<b>19295</b>	<b>1167.00</b>
38	Nagpur Commr.	74260	5809	0	0	80069	1114.00
39	Pune Commr.	120849	7063	2	0	127910	1645.00
40	Thane Commr.	86889	6673	0	27	93535	235.00
41	Mumbai Commr.	180727	20246	88	11	200874	2777.00
42	Nasik Commr.	28839	2697	10	0	31526	62.00
43	Aurangabad Commr.	23211	3142	0	0	26353	123.00
44	Solapur Commr.	19803	1427	38	0	21192	69.00
45	Navi Mumbai	34892	3601	0	0	38493	93.00
46	Amravati Commr.	11725	2236	0	0	13961	78.00
	<b>Total Commrs.</b>	<b>581195</b>	<b>52894</b>	<b>138</b>	<b>38</b>	<b>633913</b>	<b>6196.00</b>
	<b>Total</b>	<b>1369821</b>	<b>162992</b>	<b>516</b>	<b>331</b>	<b>1531966</b>	<b>15492.00</b>



Table No. 19 (Concluded)

SR No.	Unit	Cases in which Trials were Completed (Col.9= Col. 10+11)	Cases convicted	Cases Acquitted or Discharged	Cases Pending Trial at the end of the year	Cases Conviction Rate (Col. 10/9)x 100	Cases Pendency Rate (Col. 12/7)x 100
1	2	9	10	11	12	16	17
1	Akola	2328	362	1966	20212	15.55	87.70
2	Amravati Rural	2841	619	2222	26334	21.79	89.70
3	Buldhana	2906	162	2744	22938	5.57	88.10
4	Yavatmal	3945	154	3791	52129	3.9	92.70
5	Washim	933	54	879	6321	5.79	83.50
*	<b>Amravati Range</b>	<b>12953</b>	<b>1351</b>	<b>11602</b>	<b>127934</b>	<b>10.43</b>	<b>90.00</b>
6	Aurangabad Rural	2187	454	1733	25579	20.76	91.20
7	Jalna	1629	150	1479	19866	9.21	91.10
8	Beed	3133	557	2576	18111	17.78	83.70
9	Osmanabad	2034	148	1886	13862	7.28	86.80
*	<b>Aurangabad Range</b>	<b>8983</b>	<b>1309</b>	<b>7674</b>	<b>77418</b>	<b>14.57</b>	<b>88.50</b>
10	Nanded	2807	217	2590	40321	7.73	93.30
11	Latur	2049	115	1934	38401	5.61	94.40
12	Parbhani	1827	103	1724	17225	5.64	90.00
13	Hingoli	1193	275	918	11526	23.05	89.00
*	<b>Nanded Range</b>	<b>7876</b>	<b>710</b>	<b>7166</b>	<b>107473</b>	<b>9.01</b>	<b>92.60</b>
14	Kolhapur	1633	186	1447	31689	11.39	94.90
15	Pune Rural	1755	209	1546	48831	11.91	95.70
16	Sangli	3518	1426	2092	21063	40.53	85.10
17	Satara	4121	771	3350	20360	18.71	82.60
18	Solapur Rural	2370	673	1697	46975	28.4	94.30
*	<b>Kolhapur Range</b>	<b>13397</b>	<b>3265</b>	<b>10132</b>	<b>168918</b>	<b>24.37</b>	<b>92.00</b>
19	Bhandara	1913	365	1548	8181	19.08	76.50
20	Chandrapur	3193	290	2903	24000	9.08	88.30
21	Nagpur Rural	3415	835	2580	39673	24.45	90.80
22	Wardha	2876	215	2661	14578	7.48	83.00
*	<b>Nagpur Range</b>	<b>11397</b>	<b>1705</b>	<b>9692</b>	<b>86432</b>	<b>14.96</b>	<b>87.20</b>
23	Gadchiroli	809	48	761	2626	5.93	76.20
24	Gondia	1466	135	1331	5753	9.21	76.30
*	<b>Gadchiroli Range</b>	<b>2275</b>	<b>183</b>	<b>2092</b>	<b>8379</b>	<b>8.04</b>	<b>76.30</b>
25	Ahmednagar	4888	728	4160	47686	14.89	89.20
26	Dhule	1820	261	1559	17194	14.34	90.30
27	Jalgaon	3576	1052	2524	37275	29.42	90.60
28	Nasik Rural	7213	923	6290	36669	12.8	83.20
29	Nandurbar	896	111	785	6718	12.39	86.70
*	<b>Nasik Range</b>	<b>18393</b>	<b>3075</b>	<b>15318</b>	<b>145542</b>	<b>16.72</b>	<b>88.00</b>
30	Raigad	1982	274	1708	11509	13.82	83.10
31	Ratnagiri	921	54	867	4557	5.86	83.20
32	Sindhudurg	676	69	607	2150	10.21	75.80
33	Thane Rural	762	54	708	21737	7.09	95.90
34	Palghar	1185	186	999	27780	15.7	95.70
*	<b>Thane Range</b>	<b>5526</b>	<b>637</b>	<b>4889</b>	<b>67733</b>	<b>11.53</b>	<b>91.70</b>
35	Mumbai Railway	1021	782	239	10382	76.59	83.60
36	Pune Railway	110	68	42	1053	61.82	88.80
37	Nagpur Railway	105	54	51	5457	51.43	96.00
*	<b>Railway Range</b>	<b>1236</b>	<b>904</b>	<b>332</b>	<b>16892</b>	<b>73.14</b>	<b>87.50</b>
38	Nagpur Commr.	2309	356	1953	76646	15.42	95.70
39	Pune Commr.	1949	323	1626	124316	16.57	97.20
40	Thane Commr.	1928	168	1760	91372	8.71	97.70
41	Mumbai Commr.	11273	4991	6282	186824	44.27	93.00
42	Nasik Commr.	1290	363	927	30174	28.14	95.70
43	Aurangabad Commr.	1569	274	1295	24661	17.46	93.60
44	Solapur Commr.	676	146	530	20447	21.6	96.50
45	Navi Mumbai	1125	458	667	37275	40.71	96.80
46	Amravati Commr.	827	66	761	13056	7.98	93.50
*	<b>Total Commrs.</b>	<b>22946</b>	<b>7145</b>	<b>15801</b>	<b>604771</b>	<b>31.14</b>	<b>95.40</b>
**	<b>Total</b>	<b>104982</b>	<b>20284</b>	<b>84698</b>	<b>1411492</b>	<b>19.32</b>	<b>92.10</b>

तक्ता क्र. २०  
सन २०१४ मध्ये न्यायालयांकडून विशेष व स्थानिक कायद्यांतर्गत खटल्यांची निर्गती - गुन्हे शिर्ष निहाय

Table -20  
Disposal of SLL Cases by Courts during 2014 (Crime Head-wise)

S.No	Crime Head	Cases pending trial from the previous year	Cases sent for trial during the year	No. of cases withdrawn by the Govt.	No. Of cases disposed by Plea Bargaining	Total no. Of cases for trial during the year Col.3+4 - Col.5 - col. 6	Cases compound ed or withdrawn
1	2	3	4	5	6	7	8
1	Arms Act, 1959	15236	1270	1	0	16505	72
2	Narcotic Drugs & Psychotropic Substances Act, 1985	10957	10490	5	0	21442	363
3	Gambling Act, 1867	138719	16190	25	73	154811	925
4	Excise Act, 1944	1	0	0	0	1	0
5	Prohibition Act	702281	61923	96	7	764101	8617
6	Explosives and Explosive Substances Act	829	32	0	0	861	2
7	Immoral Traffic (Prevention) Act, 1956	3759	235	0	0	3994	2
8	Indian Railways Act, 1989	1300	4	0	0	1304	33
9	Registration of Foreigners Act, 1939	424	8	0	0	432	0
10	Protection of Civil Rights Act, 1955	309	13	0	0	322	0
10.1	PCR Act for crimes committed against SCs	306	9	0	0	315	0
10.2	PCR Act for crimes committed against STs	3	4	0	0	7	0
10.3	PCR Act for crimes committed against Others	0	0	0	0	0	0
11	Passport Act, 1967	436	70	0	3	503	1
12	Essential Commodities Act, 1955	18718	1067	6	0	19779	35
13	Antiquities & Art Treasures Act, 1972	17	2	0	0	19	0
14	Dowry Prohibition Act, 1961	314	35	0	0	349	4
15	Indecent Representation of Women (Prohibition) Act, 1986	57	0	0	0	57	0
16	Copyright Act, 1957	7063	296	0	0	7359	27
17	Commission of Sati Prevention Act 1987	0	0	0	0	0	0
18	SC/ST (Prevention of Atrocities) Act, 1989)	1987	314	0	0	2301	8
18.1	POA Act for crimes committed against SCs	1536	260	0	0	1796	6
18.2	POA Act for crimes committed against STs	451	54	0	0	505	2
19	Forest Act, 1927	374	28	0	0	402	1
20	Prohibition of Child Marriage Act, 2006	110	7	0	0	117	0
21	Protection of Women from Domestic Violence Act, 2005	18	3	0	0	21	0
22	Information Technology Act, 2000	226	124	0	0	350	2
23	Official Secrets Act, 1923	0	1	0	0	1	0
24	Electricity Act, 2003	2633	211	2	1	2841	11
25	Wildlife Protection Act, 1972	242	34	0	0	276	0
26	Bonded Labour System (Abolition) Act, 1976	3	2	0	0	5	0
27	Environmental (Protection) Act, 1986	72	23	0	0	95	0

तक्ता क्र. २०

सन २०१४ मध्ये न्यायालयांकडून विशेष व स्थानिक कायद्यांतर्गत खटल्यांची निर्गती - गुन्हे शिर्ष निहाय

Table -20

Disposal of SLL Cases by Courts during 2014 (Crime Head-wise)

S.No	Crime Head	Cases pending trial from the previous year	Cases sent for trial during the year	No. of cases withdrawn by the Govt.	No. Of cases disposed by Plea Bargaining	Total no. Of cases for trial during the year Col.3+4 - Col.5 - col. 6	Cases compound ed or withdrawn
1	2	3	4	5	6	7	8
28	Air (Prevention & Control of Pollution) Act, 1981	8	8	0	0	16	0
29	Water (Prevention & Control of Pollution) Act, 1974(as amended in 1988)	0	0	0	0	0	0
30	National Security Act, 1980	2	0	0	0	2	0
31	Unlawful Activities (Prevention) Act, 1967	0	1	0	0	1	0
32	Young Persons (Harmful Publications) Act, 1956	0	0	0	0	0	0
33	Railway Property (Unlawful Possession) Act, 1966	3	0	0	0	3	0
34	Prevention of Damage to Public Property Act, 1984	374	122	0	0	496	7
35	Transplantation of Human Organs Act, 1994	0	0	0	0	0	0
36	Trade Marks Act, 1999	1	0	0	0	1	0
37	Prevention of Insults to National Honour Act, 1971	28	11	0	0	39	0
38	State Emblem (Prohibition of Improper Use) Act, 2005	0	0	0	0	0	0
39	Lotteries (Regulation) Act, 1998	18	24	0	0	42	0
40	Citizenship Act, 1955	0	0	0	0	0	0
41	Foreigners Act, 1946	13	13	0	0	26	0
42	Place of Worship (Special Provisions) Act, 1991	0	0	0	0	0	0
43	Religious Institution (Prevention of Misuse) Act, 1988	0	1	0	0	1	0
44	Representation of People Act, 1951	41	30	0	0	71	0
45	Emigration Act, 1983	1	0	0	0	1	0
46	Juvenile Justice (Care and Protection of Children) Act, 2000	18	16	0	0	34	0
47	Infant Substitutes Regulation Act, 2003	1	0	0	0	1	0
48	Anti-Hijacking Act, 1982	0	0	0	0	0	0
49	Atomic Energy Act, 1962	0	1	0	0	1	0
50	Weapons of Mass Destruction (Proh. of Unlawful Activities) Act, 2005	0	0	0	0	0	0
51	Suppression of Unlawful Acts against Safety of Civil Aviation Act, 1982	0	0	0	0	0	0
52	Safety of Maritime Navigation Act, 2002	0	0	0	0	0	0
53	Manual Scavengers and Construction of Dry Latrines (P) Act, 1993	0	0	0	0	0	0
54	Pre-Natal Diagnostic Techniques (Reg and Prev of Misuse) Act, 1994	0	1	0	0	1	0
55	The Maritime Zones of India (Reg of Fishing by Foreign Vessels) Act, 1981	0	0	0	0	0	0
56	Other SLL crimes	222793	33898	54	81	256556	1458
57	<b>Total Cognizable SLL crimes</b>	<b>1129386</b>	<b>126508</b>	<b>189</b>	<b>165</b>	<b>1255540</b>	<b>11568</b>

Table No. 20 (Concluded)

Sr.No.	Crime Head	Cases in which trials were completed (Col. 10+11)	Cases convicted	Cases acquitted or discharged	Cases pending trial at the end of the year (Col.7 - (Col.8+9))	Cases Conviction Rate (Col. 10/9)x 100	Cases Pendency Rate (Col. 12/7)x 100
1	2	9	10	11	12	13	14
1	Arms Act, 1959	685	38	647	15748	5.5	95.4
2	Narcotic Drugs & Psychotropic Substances Act, 1985	3806	3506	300	17273	92.1	80.6
3	Gambling Act, 1867	10290	2634	7656	143596	25.6	92.8
4	Excise Act, 1944	0	0	0	1	0	100
5	Prohibition Act	40474	545	39929	715010	1.3	93.6
6	Explosives and Explosive Substances Act	36	1	35	823	2.8	95.6
7	Immoral Traffic (Prevention) Act, 1956	91	44	47	3901	48.4	97.7
8	Indian Railways Act, 1989	12	1	11	1259	8.3	96.5
9	Registration of Foreigners Act, 1939	7	5	2	425	71.4	98.4
10	Protection of Civil Rights Act, 1955	15	0	15	307	0	95.3
10.1	PCR Act for crimes committed against SCs	15	0	15	300	0	95.2
10.2	PCR Act for crimes committed against STs	0	0	0	7	0	100
10.3	PCR Act for crimes committed against Others	0	0	0	0	0	0
11	Passport Act, 1967	56	51	5	446	91.1	88.7
12	Essential Commodities Act, 1955	1575	35	1540	18169	2.2	91.9
13	Antiquities & Art Treasures Act, 1972	0	0	0	19	0	100
14	Dowry Prohibition Act, 1961	35	14	21	310	40	88.8
15	Indecent Representation of Women (Prohibition) Act, 1986	1	0	1	56	0	98.2
16	Copyright Act, 1957	276	4	272	7056	1.4	95.9
17	Commission of Sati Prevention Act 1987	0	0	0	0	0	0
18	SC/ST (Prevention of Atrocities) Act, 1989)	230	9	221	2063	3.9	89.7
18.1	POA Act for crimes committed against SCs	193	7	186	1597	3.6	88.9
18.2	POA Act for crimes committed against STs	37	2	35	466	5.4	92.3
19	Forest Act, 1927	27	2	25	374	7.4	93
20	Prohibition of Child Marriage Act, 2006	9	0	9	108	0	92.3
21	Protection of Women from Domestic Violence Act, 2005	0	0	0	21	0	100
22	Information Technology Act, 2000	11	2	9	337	18.2	96.3
23	Official Secrets Act, 1923	0	0	0	1	0	100
24	Electricity Act, 2003	219	32	187	2611	14.6	91.9
25	Wildlife Protection Act, 1972	5	1	4	271	20	98.2
26	Bonded Labour System (Abolition) Act, 1976	0	0	0	5	0	100
27	Environmental (Protection) Act, 1986	10	1	9	85	10	89.5

Table No. 20 (Concluded)

Sr.No.	Crime Head	Cases in which trials were completed (Col. 10+11)	Cases convicted	Cases acquitted or discharged	Cases pending trial at the end of the year (Col.7 - (Col.8+9)	Cases Conviction Rate (Col. 10/9)x 100	Cases Pendency Rate (Col. 12/7)x 100
1	2	9	10	11	12	13	14
28	Air (Prevention & Control of Pollution) Act, 1981	4	0	4	12	0	75
29	Water (Prevention & Control of Pollution) Act, 1974(as amended in 1988)	0	0	0	0	0	0
30	National Security Act, 1980	0	0	0	2	0	100
31	Unlawful Activities (Prevention) Act, 1967	0	0	0	1	0	100
32	Young Persons (Harmful Publications) Act, 1956	0	0	0	0	0	0
33	Railway Property (Unlawful Possession) Act, 1966	0	0	0	3	0	100
34	Prevention of Damage to Public Property Act, 1984	37	8	29	452	21.6	91.1
35	Transplantation of Human Organs Act, 1994	0	0	0	0	0	0
36	Trade Marks Act, 1999	1	0	1	0	0	0
37	Prevention of Insults to National Honour Act, 1971	4	1	3	35	25	89.7
38	State Emblem (Prohibition of Improper Use) Act, 2005	0	0	0	0	0	0
39	Lotteries (Regulation) Act, 1998	5	1	4	37	20	88.1
40	Citizenship Act, 1955	0	0	0	0	0	0
41	Foreigners Act, 1946	8	4	4	18	50	69.2
42	Place of Worship (Special Provisions) Act, 1991	0	0	0	0	0	0
43	Religious Institution (Prevention of Misuse) Act, 1988	0	0	0	1	0	100
44	Representation of People Act, 1951	5	0	5	66	0	93
45	Emigration Act, 1983	0	0	0	1	0	100
46	Juvenile Justice (Care and Protection of Children) Act, 2000	2	1	1	32	50	94.1
47	Infant Substitutes Regulation Act, 2003	0	0	0	1	0	100
48	Anti-Hijacking Act, 1982	0	0	0	0	0	0
49	Atomic Energy Act, 1962	0	0	0	1	0	100
50	Weapons of Mass Destruction (Proh. of Unlawful Activities) Act, 2005	0	0	0	0	0	0
51	Suppression of Unlawful Acts against Safety of Civil Aviation Act, 1982	0	0	0	0	0	0
52	Safety of Maritime Navigation Act, 2002	0	0	0	0	0	0
53	Manual Scavengers and Construction of Dry Latrines (P) Act, 1993	0	0	0	0	0	0
54	Pre-Natal Diagnostic Techniques (Reg and Prev of Misuse) Act, 1994	0	0	0	1	0	100
55	The Maritime Zones of India (Reg of Fishing by Foreign Vessels) Act, 1981	0	0	0	0	0	0
56	Other SLL crimes	18152	13231	4921	236946	72.9	92.4
57	<b>Total Cognizable SLL crimes</b>	<b>76088</b>	<b>20171</b>	<b>55917</b>	<b>1167884</b>	<b>26.5</b>	<b>93</b>

तक्ता क्र. २१

सन २०१४ मध्ये न्यायालयांकडून विशेष व स्थानिक कायद्यांतर्गत खटल्यांची निर्गती (घटक - निहाय)

Table 21

Disposal of SLL Cases by Courts during 2014 (UNIT-WISE)

Sr.No.	Unit	Cases pending trial from the previous year (col.21)	Cases sent for trial during the year	No. of cases withdrawn by the Govt.	No. Of cases disposed by Plea Bargaining.	Total no. Of cases for trial during the year Col.3+4 - Col.5 - col. 6	Cases compounded or withdrawn
1	2	3	4	5	6	7	8
1	Akola	11888	2509	0	0	14397	634.00
2	Amravati Rural	23433	4349	0	0	27782	18.00
3	Buldhana	15721	4428	38	0	20111	481.00
4	Yavatmal	66973	4578	0	0	71551	50.00
5	Washim	4512	1600	0	0	6112	61.00
*	<b>Amravati Range</b>	<b>122527</b>	<b>17464</b>	<b>38</b>	<b>0</b>	<b>139953</b>	<b>1244.00</b>
6	Aurangabad Rural	11428	2382	0	0	13810	42.00
7	Jalna	10910	1546	0	0	12456	55.00
8	Beed	9490	2622	0	0	12112	917.00
9	Osmanabad	9900	1710	0	0	11610	0.00
*	<b>Aurangabad Range</b>	<b>41728</b>	<b>8260</b>	<b>0</b>	<b>0</b>	<b>49988</b>	<b>1014.00</b>
10	Nanded	15532	2600	0	0	18132	0.00
11	Latur	34755	2007	0	0	36762	0.00
12	Parbhani	7967	2075	0	0	10042	0.00
13	Hingoli	6582	1147	0	0	7729	283.00
*	<b>Nanded Range</b>	<b>64836</b>	<b>7829</b>	<b>0</b>	<b>0</b>	<b>72665</b>	<b>283.00</b>
14	Kolhapur	22715	2079	0	79	24715	0.00
15	Pune Rural	36048	1941	0	0	37989	320.00
16	Sangli	32216	1081	0	0	33297	298.00
17	Satara	6683	1879	0	0	8562	0.00
18	Solapur Rural	67603	3109	0	0	70712	775.00
*	<b>Kolhapur Range</b>	<b>165265</b>	<b>10089</b>	<b>0</b>	<b>79</b>	<b>175275</b>	<b>1393.00</b>
19	Bhandara	14709	2990	0	0	17699	1235.00
20	Chandrapur	15297	2849	0	0	18146	0.00
21	Nagpur Rural	32912	3522	0	0	36434	423.00
22	Wardha	24587	10185	0	0	34772	2289.00
*	<b>Nagpur Range</b>	<b>87505</b>	<b>19546</b>	<b>0</b>	<b>0</b>	<b>107051</b>	<b>3947.00</b>
23	Gadchiroli	2251	1684	0	0	3935	0.00
24	Gondia	7308	1395	0	0	8703	889.00
*	<b>Gadchiroli Range</b>	<b>9559</b>	<b>3079</b>	<b>0</b>	<b>0</b>	<b>12638</b>	<b>889.00</b>
25	Ahmednagar	41648	2452	0	0	44100	1.00
26	Dhule	17647	1692	0	0	19339	0.00
27	Jalgaon	26407	3465	0	0	29872	3.00
28	Nasik Rural	22742	2351	0	8	25085	11.00
29	Nandurbar	8133	1033	0	73	9093	365.00
*	<b>Nasik Range</b>	<b>116577</b>	<b>10993</b>	<b>0</b>	<b>81</b>	<b>127489</b>	<b>380.00</b>
30	Raigad	5259	576	126	0	5709	27.00
31	Ratnagiri	1667	668	0	0	2335	0.00
32	Sindhudurg	1518	395	0	0	1913	7.00
33	Thane Rural	7358	631	0	0	7989	26.00
34	Palghar	9023	559	0	0	9582	1.00
*	<b>Thane Range</b>	<b>24825</b>	<b>2829</b>	<b>126</b>	<b>0</b>	<b>27528</b>	<b>61.00</b>
35	Mumbai Railway	2137	123	0	0	2260	57.00
36	Pune Railway	255	58	0	0	313	0.00
37	Nagpur Railway	3758	47	0	0	3805	10.00
*	<b>Railway Range</b>	<b>6150</b>	<b>228</b>	<b>0</b>	<b>0</b>	<b>6378</b>	<b>67.00</b>
38	Nagpur Commr.	69105	16861	2	0	85964	1095.00
39	Pune Commr.	153932	7269	0	0	161201	236.00
40	Thane Commr.	51990	2128	0	0	54118	41.00
41	Mumbai Commr.	34574	14535	23	5	49081	746.00
42	Nasik Commr.	44992	1053	0	0	46045	0.00
43	Aurangabad Commr.	12202	1052	0	0	13254	2.00
44	Solapur Commr.	93227	1102	0	0	94329	0.00
45	Navi Mumbai	19273	806	0	0	20079	17.00
46	Amravati Commr.	11119	1385	0	0	12504	153.00
*	<b>Total Commrs.</b>	<b>490414</b>	<b>46191</b>	<b>25</b>	<b>5</b>	<b>536575</b>	<b>2290.00</b>
**	<b>Total</b>	<b>1129386</b>	<b>126508</b>	<b>189</b>	<b>165</b>	<b>1255540</b>	<b>11568.00</b>

Table No. 21 (Concluded)

Sr.No.	Unit	Cases in which trials were completed (Col. 10+11)	Cases convicted	Cases acquitted or discharged	Cases pending trial at the end of the year ( Col.7 - (Col.8+9)	Cases Conviction Rate (Col. 10/9)x 100	Cases Pendency Rate (Col. 12/7)x 100
1	2	9	10	11	12	13	14
1	Akola	922	175	747	12841	18.98	89.20
2	Amravati Rural	2378	150	2228	25386	6.31	91.40
3	Buldhana	2608	186	2422	17022	7.13	84.60
4	Yavatmal	3539	282	3257	67962	7.97	95.00
5	Washim	993	38	955	5058	3.83	82.80
	<b>Amravati Range</b>	<b>10440</b>	<b>831</b>	<b>9609</b>	<b>128269</b>	<b>7.96</b>	<b>91.70</b>
6	Aurangabad Rural	1624	191	1433	12144	11.76	87.90
7	Jalna	881	265	616	11520	30.08	92.50
8	Beed	1905	433	1472	9290	22.73	76.70
9	Osmanabad	1690	132	1558	9920	7.81	85.40
	<b>Aurangabad Range</b>	<b>6100</b>	<b>1021</b>	<b>5079</b>	<b>42874</b>	<b>16.74</b>	<b>85.80</b>
10	Nanded	1204	29	1175	16928	2.41	93.40
11	Latur	1349	18	1331	35413	1.33	96.30
12	Parbhani	1303	31	1272	8739	2.38	87.00
13	Hingoli	516	126	390	6930	24.42	89.70
	<b>Nanded Range</b>	<b>4372</b>	<b>204</b>	<b>4168</b>	<b>68010</b>	<b>4.67</b>	<b>93.60</b>
14	Kolhapur	1129	159	970	23586	14.08	95.40
15	Pune Rural	661	26	635	37008	3.93	97.40
16	Sangli	1096	92	1004	31903	8.39	95.80
17	Satara	1370	281	1089	7192	20.51	84.00
18	Solapur Rural	290	20	270	69647	6.9	98.50
	<b>Kolhapur Range</b>	<b>4546</b>	<b>578</b>	<b>3968</b>	<b>169336</b>	<b>12.71</b>	<b>96.60</b>
19	Bhandara	2710	344	2366	13754	12.69	77.70
20	Chandrapur	3289	194	3095	14857	5.9	81.90
21	Nagpur Rural	2153	332	1821	33858	15.42	92.90
22	Wardha	7760	143	7617	24723	1.84	71.10
	<b>Nagpur Range</b>	<b>15912</b>	<b>1013</b>	<b>14899</b>	<b>87192</b>	<b>6.37</b>	<b>81.40</b>
23	Gadchiroli	2373	22	2351	1562	0.93	39.70
24	Gondia	637	102	535	7177	16.01	82.50
	<b>Gadchiroli Range</b>	<b>3010</b>	<b>124</b>	<b>2886</b>	<b>8739</b>	<b>4.12</b>	<b>69.10</b>
25	Ahmednagar	1485	186	1299	42614	12.53	96.60
26	Dhule	718	12	706	18621	1.67	96.30
27	Jalgaon	2581	167	2414	27288	6.47	91.30
28	Nasik Rural	2722	245	2477	22352	9	89.10
29	Nandurbar	918	45	873	7810	4.9	85.90
	<b>Nasik Range</b>	<b>8424</b>	<b>655</b>	<b>7769</b>	<b>118685</b>	<b>7.78</b>	<b>93.10</b>
30	Raigad	1297	74	1223	4385	5.71	76.80
31	Ratnagiri	588	11	577	1747	1.87	74.80
32	Sindhudurg	529	5	524	1377	0.95	72.00
33	Thane Rural	233	16	217	7730	6.87	96.80
34	Palghar	132	4	128	9449	3.03	98.60
	<b>Thane Range</b>	<b>2779</b>	<b>110</b>	<b>2669</b>	<b>24688</b>	<b>3.96</b>	<b>89.70</b>
35	Mumbai Railway	96	31	65	2107	32.29	93.20
36	Pune Railway	54	52	2	259	96.3	82.70
37	Nagpur Railway	23	11	12	3772	47.83	99.10
	<b>Railway Range</b>	<b>173</b>	<b>94</b>	<b>79</b>	<b>6138</b>	<b>54.34</b>	<b>96.20</b>
38	Nagpur Commr.	10015	8441	1574	74854	84.28	87.10
39	Pune Commr.	2948	2451	497	158017	83.14	98.00
40	Thane Commr.	586	138	448	53491	23.55	98.80
41	Mumbai Commr.	4508	3947	561	43827	87.56	89.30
42	Nasik Commr.	318	130	188	45727	40.88	99.30
43	Aurangabad Commr.	570	105	465	12682	18.42	95.70
44	Solapur Commr.	385	22	363	93944	5.71	99.60
45	Navi Mumbai	497	266	231	19565	53.52	97.40
46	Amravati Commr.	505	41	464	11846	8.12	94.70
	<b>Total Commrs.</b>	<b>20332</b>	<b>15541</b>	<b>4791</b>	<b>513953</b>	<b>76.44</b>	<b>95.80</b>
	<b>Total</b>	<b>76088</b>	<b>20171</b>	<b>55917</b>	<b>1167884</b>	<b>26.51</b>	<b>93.00</b>